



HOWLEY PLACE, W2

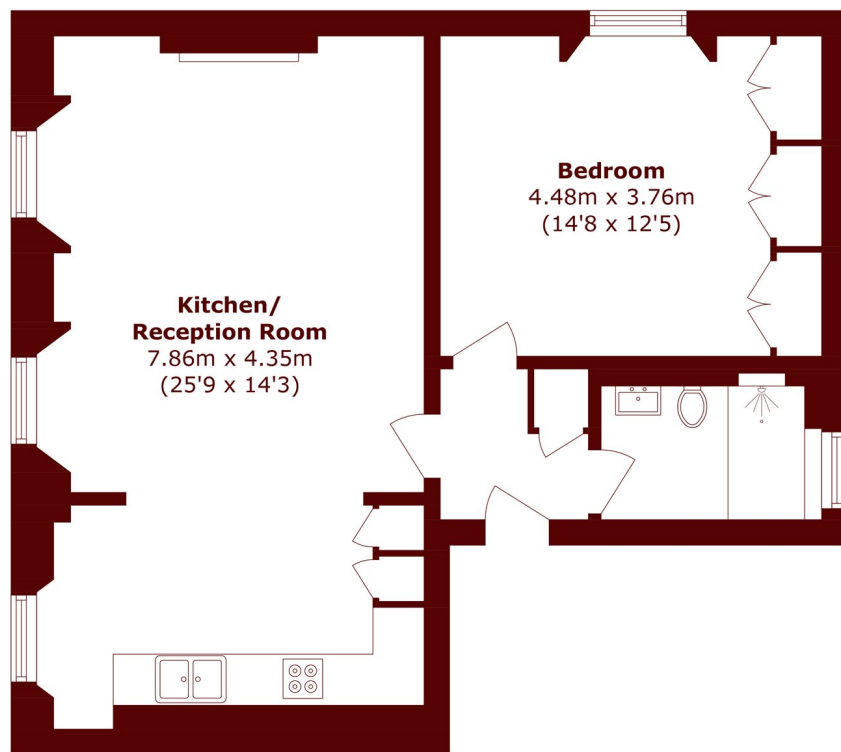
£800,000

A stunning first floor one bedroom apartment forming part of an elegant character conversion, beautifully refurbished to a high standard while retaining a wealth of charm and character.

Period Conversion
First Floor Apartment
One Bedroom

Excellent Condition
Open Plan Living
Share of Freehold

STEP INSIDE HOWLEY PLACE



First Floor

Total area (approx.): 63.6 sq. m (684.6 sq. ft)

Little Venice
020 7993 3050

Energy Rating: We aim to make our particulars both accurate and reliable. However, they are not guaranteed; nor do they form part of an offer or contract. If you require clarification on any points then please contact us, especially if you're traveling some distance to view. Please note that appliances and heating systems have not been tested and therefore no warranties can be given as to their good working order

MARSH &
PARSONS