



## DANSON MEWS, SE17

£650,000

- Private entrance
- Modern development
- Private front & rear garden
- Beautifully presented
- Low annual service charges
- Communal gardens

@marshandparsons  
marshandparsons.co.uk

MARSH &  
PARSONS

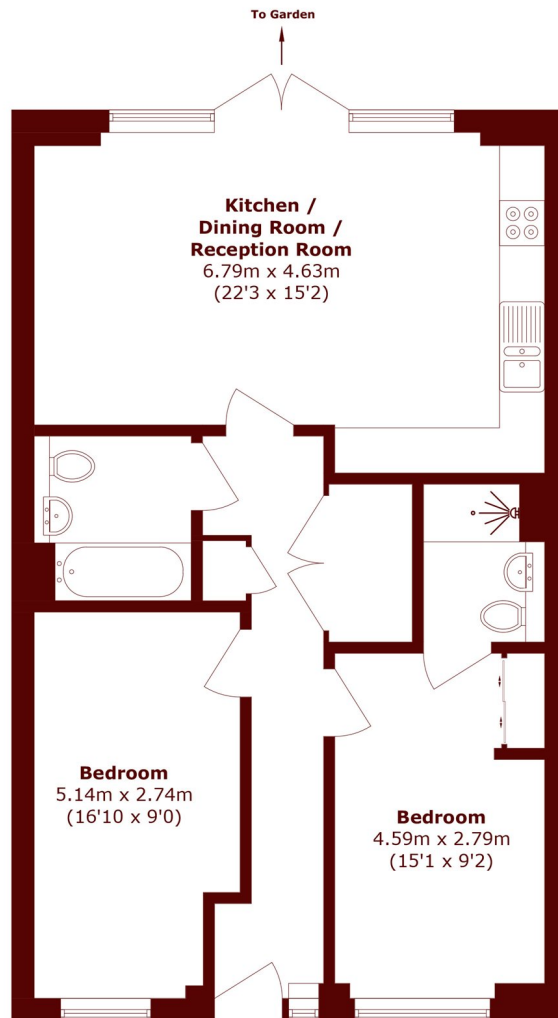


# ABOUT THE PROPERTY

A beautifully presented two bedroom, two bathroom ground floor apartment within a contemporary development, benefitting from private front and rear gardens. Finished to a high specification throughout, the property features a bright open plan living space with floor-to-ceiling windows, and a stylish modern kitchen offering ample storage and generous worktop space, leading directly to the private south facing garden with direct access onto the well-maintained communal gardens. The principal bedroom includes built-in wardrobes and a sleek en suite shower room, while the second double bedroom is served by a modern family bathroom. Further benefits include integrated storage throughout and secure on-site cycle storage.



# STEP INSIDE DANSON MEWS



Total area (approx.): 78.2 sq. m (841.7 sq. ft)

**Kennington**  
020 7587 1533

Energy Rating: B We aim to make our particulars both accurate and reliable. However, they are not guaranteed; nor do they form part of an offer or contract. If you require clarification on any points then please contact us, especially if you're traveling some distance to view. Please note that appliances and heating systems have not been tested and therefore no warranties can be given as to their good working order

**MARSH &  
PARSONS**