



EASTCOMBE AVENUE, SE7

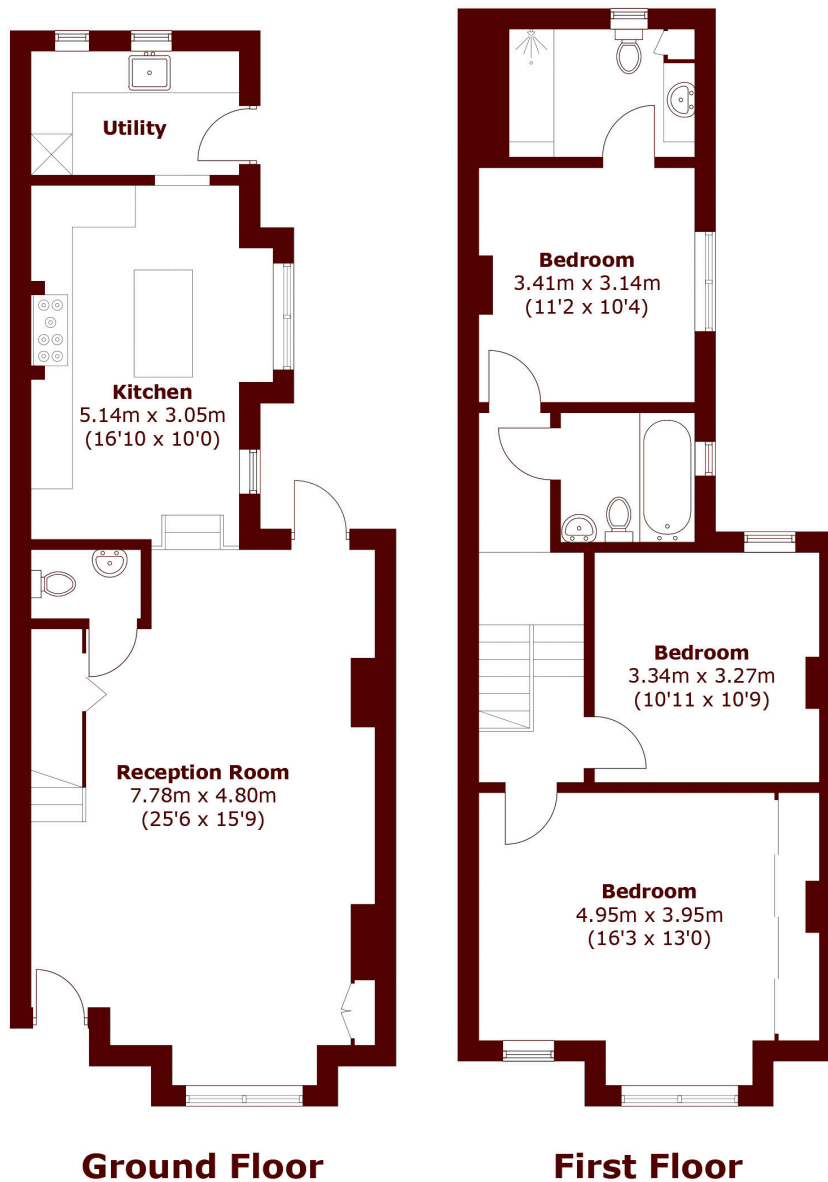
£3,000 per month

Fully renovated and available for the first time following extensive refurbishment, this spacious three bedroom, 2.5 bathroom, end of terrace home offers bright living space and a private garden. The property

Terraced house
Three bedrooms
One reception room

Two bathrooms
Garden
Energy rating: d

STEP INSIDE EASTCOMBE AVENUE



Total area (approx.): 120.1 sq. m (1,292.8 sq. ft)

Charlton
020 8296 1628

Energy Rating: D We aim to make our particulars both accurate and reliable. However, they are not guaranteed; nor do they form part of an offer or contract. If you require clarification on any points then please contact us, especially if you're traveling some distance to view. Please note that appliances and heating systems have not been tested and therefore no warranties can be given as to their good working order

MARSH &
PARSONS