



INVERNESS TERRACE, W2

£1,100,000

Two double bedrooms
Share of freehold
Two bathrooms
Private garden
Vault storage
EPC - TBC

@marshandparsons
marshandparsons.co.uk

MARSH &
PARSONS

ABOUT THE PROPERTY

A beautifully presented two double bedroom garden flat set on the highly sought-after Inverness Terrace. Offering generous accommodation throughout, the property is further complemented by a private garden.

Located at the sought-after Inverness Terrace, moments from Hyde Park, Westbourne Grove's boutiques, cafés and restaurants, with excellent transport links via Bayswater Underground Station nearby.





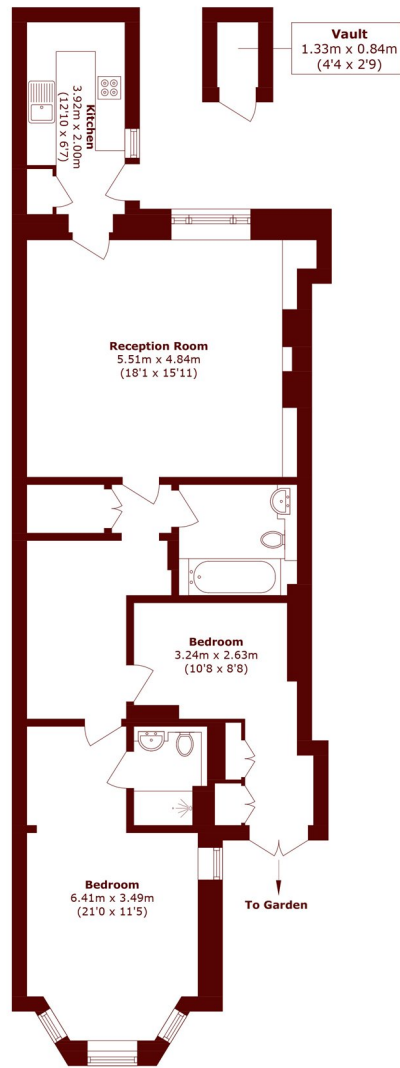


FURTHER DETAILS

This well-arranged apartment features a spacious reception room, separate kitchen, two double bedrooms, a family bathroom and an en-suite shower room. The principal bedroom benefits from direct access to a private garden, while a useful vault provides additional storage.



STEP INSIDE INVERNESS TERRACE



Lower Ground Floor

Total area (approx.): 91.9 sq. m (989.2 sq. ft)
Outbuilding area (approx.): 1.1 sq. m (11.8 sq. ft)

Notting Hill
020 7313 2890

Energy Rating: TBC We aim to make our particulars both accurate and reliable. However, they are not guaranteed; nor do they form part of an offer or contract. If you require clarification on any points then please contact us, especially if you're traveling some distance to view. Please note that appliances and heating systems have not been tested and therefore no warranties can be given as to their good working order

MARSH &
PARSONS