



## PARK STREET, SW6

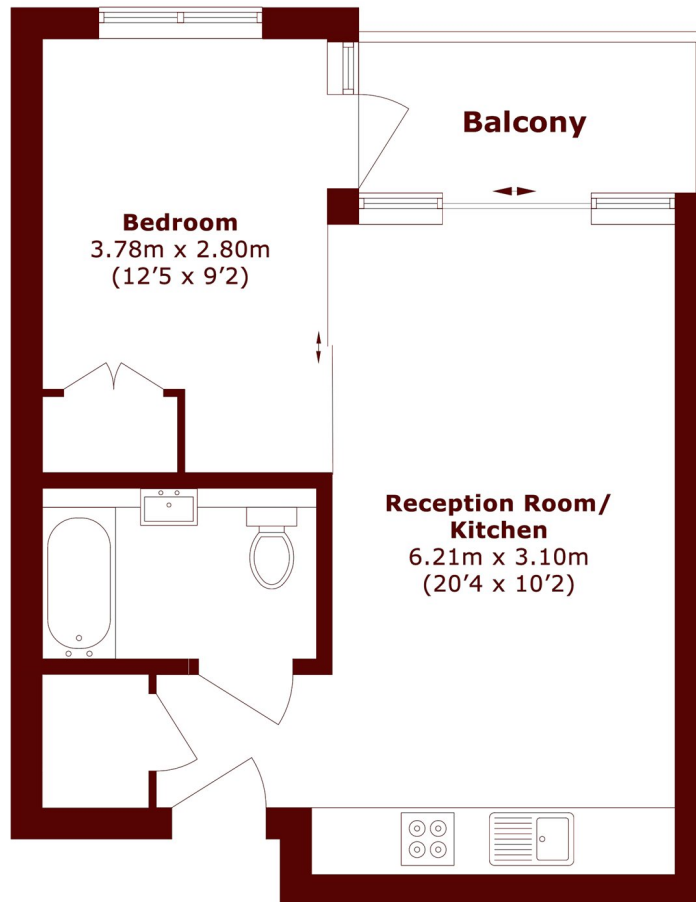
£310,635

\*53.1% Council Shared Equity Available, no rent payable on the unowned %\*

Chelsea Creek  
Balcony  
Concierge

Double bedroom  
Access to gym and pool  
Energy rating: c

# STEP INSIDE PARK STREET



## Second Floor

Total area (approx.): 40.6 sq. m (437.0 sq. ft)

Balcony area (approx.): 5.1 sq. m (54.9 sq. ft)

Fulham  
020 7736 9822

Energy Rating: We aim to make our particulars both accurate and reliable. However, they are not guaranteed; nor do they form part of an offer or contract. If you require clarification on any points then please contact us, especially if you're traveling some distance to view. Please note that appliances and heating systems have not been tested and therefore no warranties can be given as to their good working order

MARSH &  
PARSONS