



Wyatt Drive, SW13

£1,175,000



- Two Bedrooms
- Two Bathrooms

- Two Balconies
- Third Floor

- No Onward Chain
- Views Of The Thames



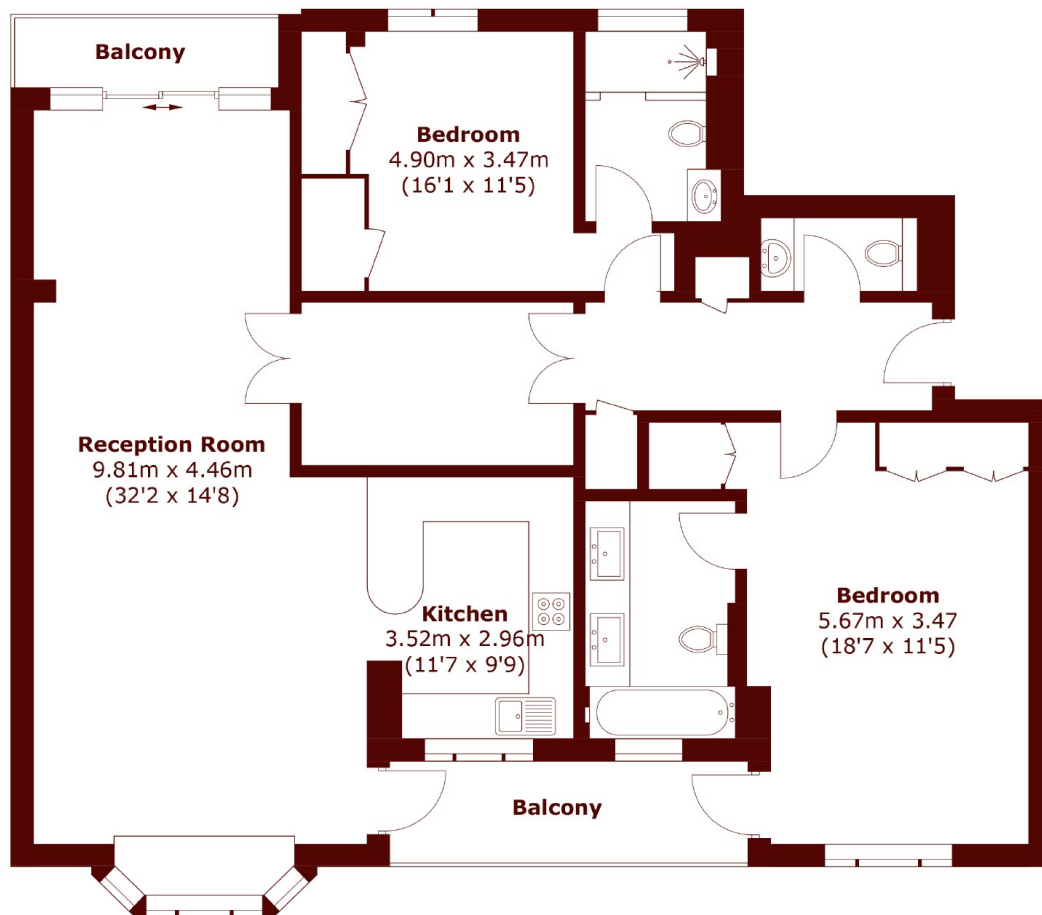
ABOUT THE PROPERTY

This spacious third floor apartment in Handel Mansions benefits from lift access. There is an abundance of natural light throughout with a delightful outlook over the communal gardens and the River Thames and to the London Wetland Centre. The apartment offers an exceptional finish throughout and benefits from a dedicated parking space along with a large storage cupboard in the lower ground floor garage, as well as off street parking for visitors.

The property opens into a wide hall leading to a spacious reception, kitchen, and dining room with two balconies one overlooking the communal gardens and River Thames, the other the London Wetland Centre. One balcony is also accessible from a principal bedroom. The contemporary kitchen includes fitted units and integrated appliances. There are two double bedrooms, both with en suites, plus a separate cloakroom. Offered with no onward chain.

Handel Mansions, part of Barnes Waterside, sits beside the Thames near Hammersmith Bridge with four tube lines for quick access to Central London. Top schools nearby include St Paul's Boys, Harrodian and The Swedish School. Just 5 minutes' walk away, Castelnau offers shops, delis, cafés, restaurants and The Bridge pub with its popular beer garden.





Third Floor

Total area (approx.): 121.1 sq. m (1,304.6 sq. ft)
Balcony: 9.9 sq. m (106.6 sq. ft)

Marsh & Parsons Barnes
73-75 Church Road, London,
SW13 9HH
020 8563 8333

We aim to make our particulars both accurate and reliable. However, they are not guaranteed; nor do they form part of an offer or contract. If you require clarification on any points then please contact us, especially if you're traveling some distance to view. Please note that appliances and heating systems have not been tested and therefore no warranties can be given as to their good working order.