



SAVONA CLOSE, SW19

£4,000 per month

- 3 or 4 bedrooms
- 2 bathrooms
- Pretty landscaped garden
- Driveway parking
- Modern finish
- Energy rating: c

@marshandparsons
marshandparsons.co.uk

MARSH &
PARSONS



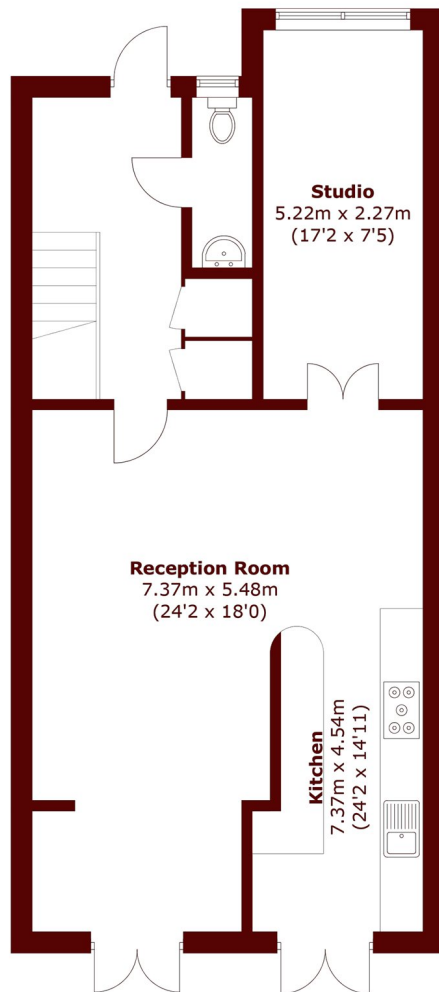
ABOUT THE PROPERTY

A three bedroom terraced house within walking distance of Wimbledon Village and Town. Comprising an open plan kitchen, dining, living room with doors onto a private garden, study, downstairs cloakroom, master bedroom with en-suite shower room, two further bedrooms, family bathroom and off-street parking.

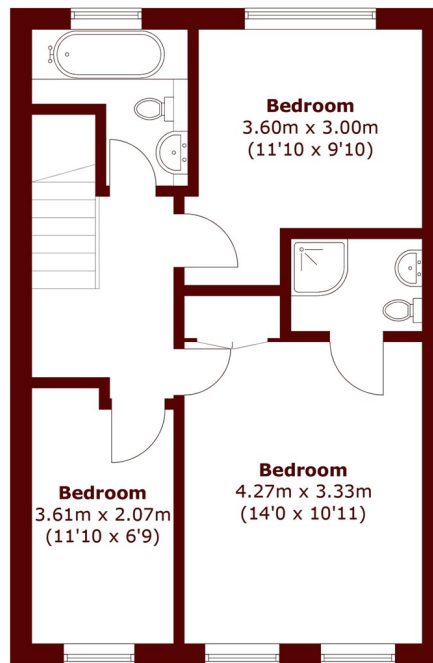
Located on a quiet cul-de-sac on the popular 'slopes' in Wimbledon, Perfectly located for both the Village and the Town.



STEP INSIDE SAVONA CLOSE



Ground Floor



First Floor

Total area (approx.): 114.9 sq. m (1236.8 sq. ft)

Wimbledon
020 8879 6661

Energy Rating: C We aim to make our particulars both accurate and reliable. However, they are not guaranteed; nor do they form part of an offer or contract. If you require clarification on any points then please contact us, especially if you're traveling some distance to view. Please note that appliances and heating systems have not been tested and therefore no warranties can be given as to their good working order

**MARSH &
PARSONS**