



## QUEENSBERRY PLACE, SW7

£750,000

Private terrace  
Fantastic condition  
Share of freehold  
Two bedrooms  
Prime South Kensington address  
Energy rating c

@marshandparsons  
marshandparsons.co.uk

MARSH &  
PARSONS



# ABOUT THE PROPERTY

An immaculate two bedroom property, finished to an incredibly high standing with air conditioning throughout and rare outdoor space in the heart of South Kensington.

Queensberry Place is well located for easy access to Knightsbridge, the famous Natural History Museum and Science Museum and is also a short walk from Hyde Park. South Kensington tube station on the District, Circle and Piccadilly line is moments away.

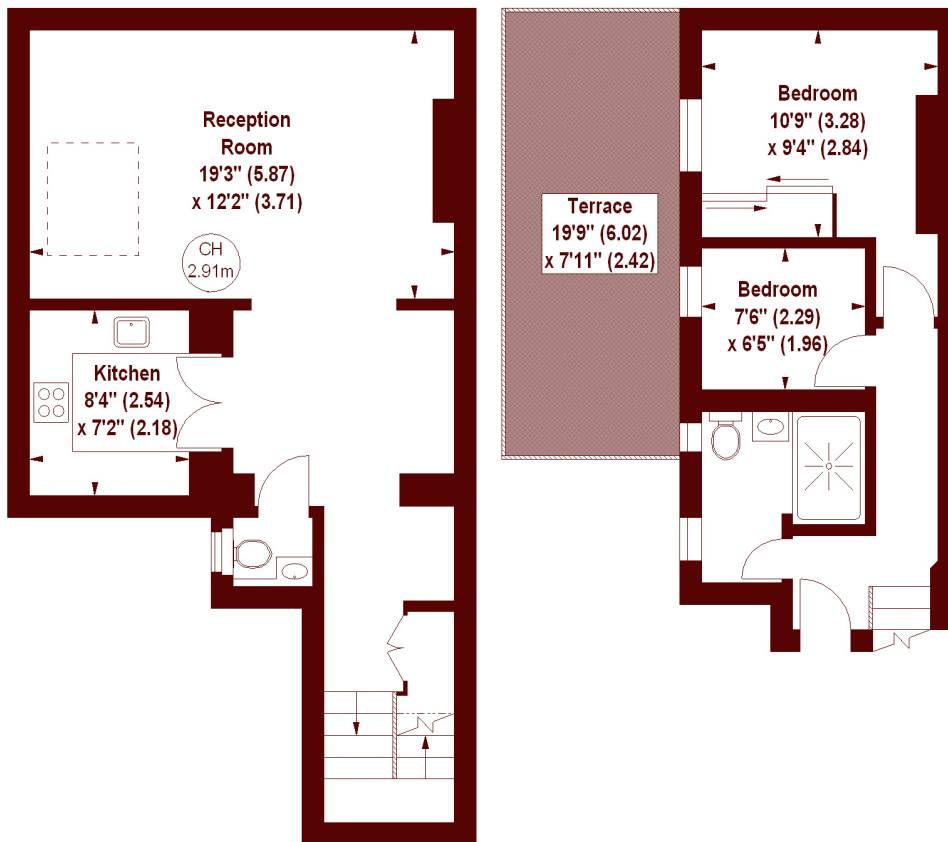


# STEP INSIDE QUEENSBERRY PLACE

## Queensberry Place, SW7

APPROX. GROSS INTERNAL FLOOR AREA 851 SQFT / 79.06 SQM

Key :  
CH - Ceiling Height



LOWER GROUND FLOOR

GROUND FLOOR

The floor plan is not to scale and measurements and areas shown are approximate and therefore should be used for illustrative purposes only. The plan has been prepared in accordance with the RICS code of Measuring Practice and whilst we have confidence in the information produced, it must not be relied on.

If there is any aspect of particular importance, you should carry out or commission your own inspection of the property.

Copyright of FeaturePRO.

South Kensington  
020 7590 0800

Energy Rating: C We aim to make our particulars both accurate and reliable. However, they are not guaranteed; nor do they form part of an offer or contract. If you require clarification on any points then please contact us, especially if you're traveling some distance to view. Please note that appliances and heating systems have not been tested and therefore no warranties can be given as to their good working order

MARSH &  
PARSONS