



THE BROADWAY, SW19

£2,500 per month

Two double bedrooms

Two bathrooms

Unfurnished

Modern

Open-plan kitchen

Energy rating: c

@marshandparsons
marshandparsons.co.uk

MARSH &
PARSONS



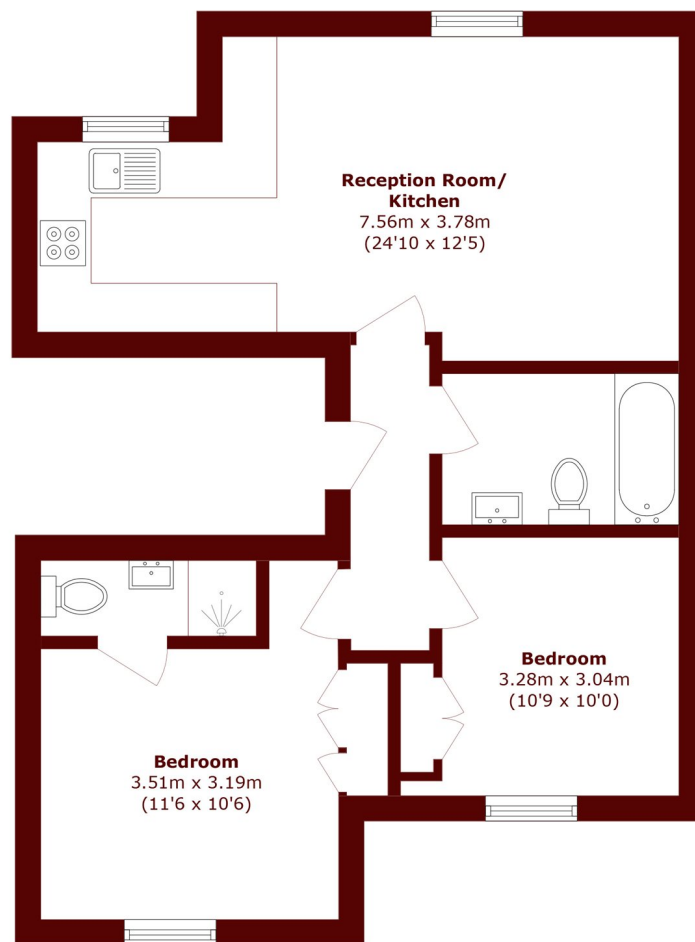
ABOUT THE PROPERTY

Recently refurbished second floor apartment with a large open plan kitchen/reception room fitted with beautiful archway windows and plantation shutters, as well as two double bedrooms with built in wardrobes, modern family bathroom, en-suite shower to master.

The property is located in the heart of Wimbledon Town centre.



STEP INSIDE THE BROADWAY



Total area (approx.): 59.9 sq. m (644.7 sq. ft)

Wimbledon
020 8879 6661

Energy Rating: C We aim to make our particulars both accurate and reliable. However, they are not guaranteed; nor do they form part of an offer or contract. If you require clarification on any points then please contact us, especially if you're traveling some distance to view. Please note that appliances and heating systems have not been tested and therefore no warranties can be given as to their good working order

MARSH &
PARSONS