



BARRHILL ROAD, SW2

£425,000

Heart of Streatham Hill
Private Balcony
62.4 sq.m
South-Facing
Open plan kitchen/living
Energy rating: C

@marshandparsons
marshandparsons.co.uk

MARSH &
PARSONS



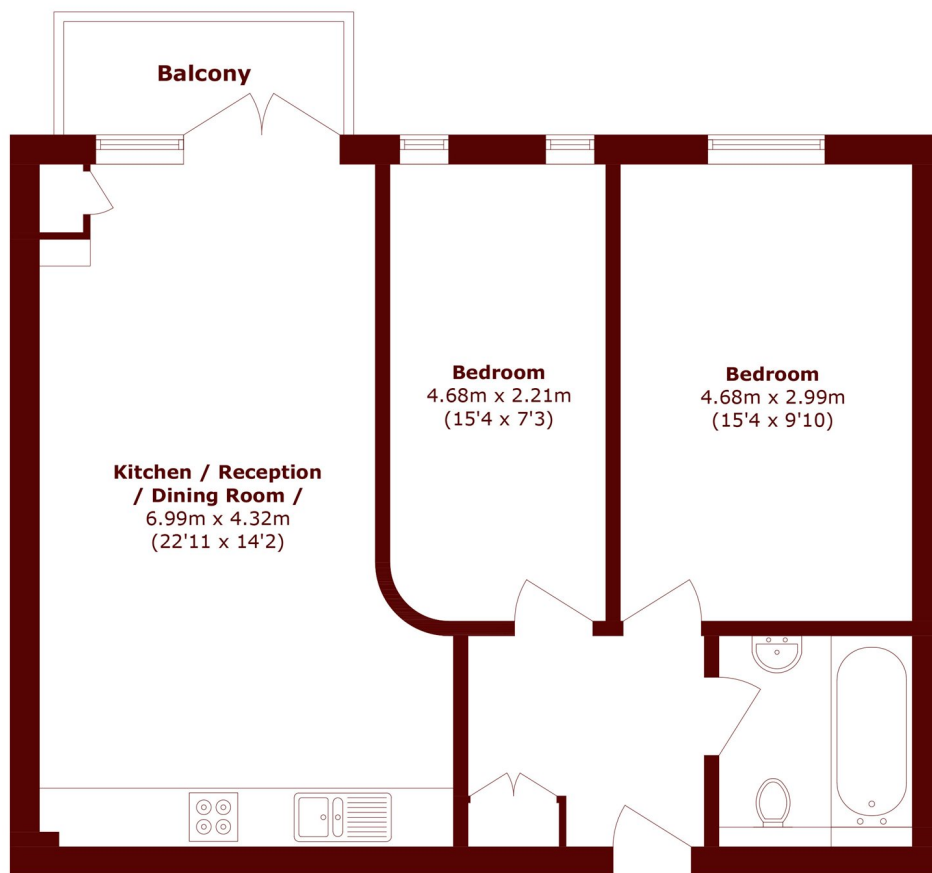
ABOUT THE PROPERTY

An exceptional two double bedroom apartment offering stylish living in the vibrant heart of Streatham Hill. Featuring a master bedroom with built-in storage, a generous second bedroom and a bright, open-plan kitchen living area for entertaining and relaxing. The main living space opens onto a private South-facing balcony.

Perfectly located for commuters, Streatham Hill Station is within close proximity with regular trains to London Victoria and London Bridge. The Northern Line at Balham Station is easily accessible, while the Victoria Line at Brixton is a short bus ride away.



STEP INSIDE BARRHILL ROAD



Total area (approx.): 62.4 sq. m (671.6 sq. ft)

Balcony area (approx.): 3.3 sq. m (35.5 sq. ft)

Streatham
020 8671 0171

Energy Rating: C We aim to make our particulars both accurate and reliable. However, they are not guaranteed; nor do they form part of an offer or contract. If you require clarification on any points then please contact us, especially if you're traveling some distance to view. Please note that appliances and heating systems have not been tested and therefore no warranties can be given as to their good working order

**MARSH &
PARSONS**