



## KENSINGTON COURT, W8

£1,075,000

Two Bedrooms  
Principal En Suite  
Wooden Floors  
Separate Kitchen  
Patio  
Share of Freehold

@marshandparsons  
marshandparsons.co.uk

MARSH &  
PARSONS



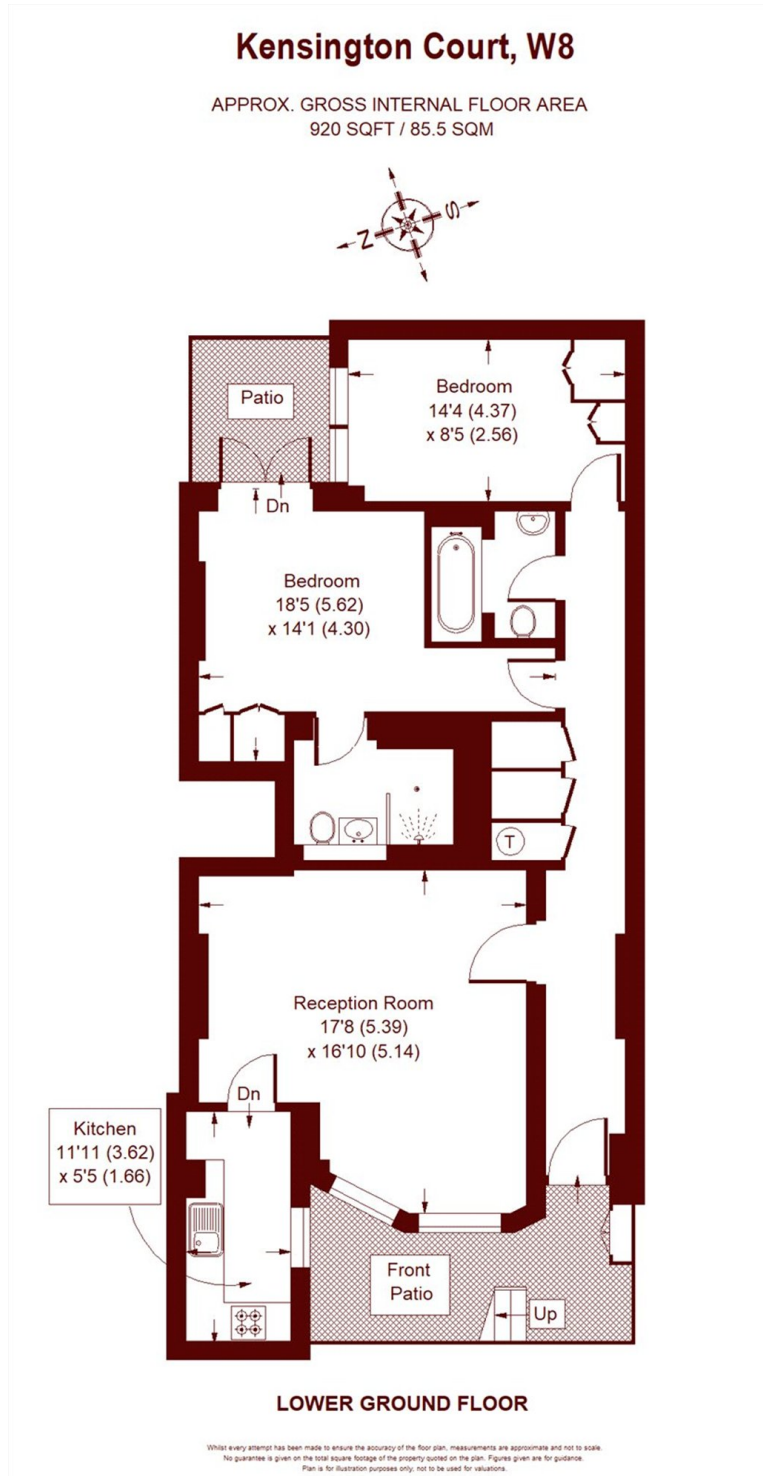
# ABOUT THE PROPERTY

A spacious two bedroom, two bathroom lower ground floor apartment with a private patio in a prime Kensington location.

Kensington Court is ideally situated moments from the popular Kensington High Street, while the green open spaces of Hyde Park and Kensington Palace Gardens are also very nearby. High Street Kensington Underground Station (Circle and District lines) is located close by and offers reliable London Underground services throughout London and to the City whilst the A4/M4 gives quick access towards Heathrow and the West.



# STEP INSIDE KENSINGTON COURT



**Kensington**  
020 7368 4450

Energy Rating: C We aim to make our particulars both accurate and reliable. However, they are not guaranteed; nor do they form part of an offer or contract. If you require clarification on any points then please contact us, especially if you're traveling some distance to view. Please note that appliances and heating systems have not been tested and therefore no warranties can be given as to their good working order

**MARSH &  
PARSONS**