



## CHEPSTOW ROAD, W2

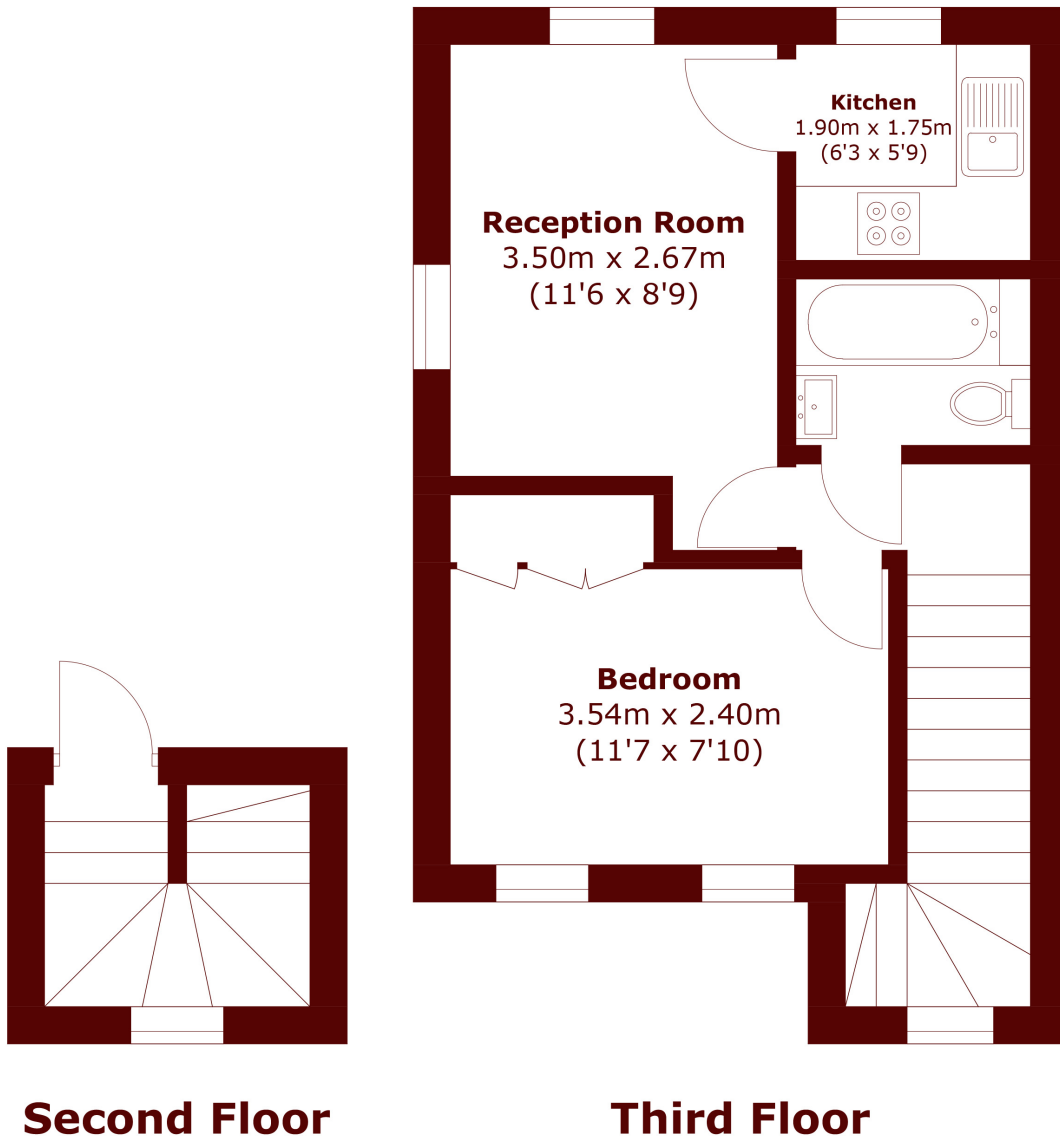
£595 per week (£2,578 per month)

A bright and spacious one-bedroom apartment set within a charming period building moments from the heart of Westbourne Grove and Notting Hill.

One bedroom  
Bright and airy  
Natural light

Period building  
Excellent condition  
Amazing location

# STEP INSIDE CHEPSTOW ROAD



Total area (approx.): 37.0 sq. m (398.2 sq. ft)

Notting Hill  
020 7313 6910

Energy Rating: C We aim to make our particulars both accurate and reliable. However, they are not guaranteed; nor do they form part of an offer or contract. If you require clarification on any points then please contact us, especially if you're traveling some distance to view. Please note that appliances and heating systems have not been tested and therefore no warranties can be given as to their good working order

MARSH &  
PARSONS