



## CHISWICK VILLAGE, W4

£430,000

Fourth floor  
Two double bedrooms  
Lift access  
Share of freehold  
Private balcony  
Energy rating: d

@marshandparsons  
marshandparsons.co.uk

MARSH &  
PARSONS



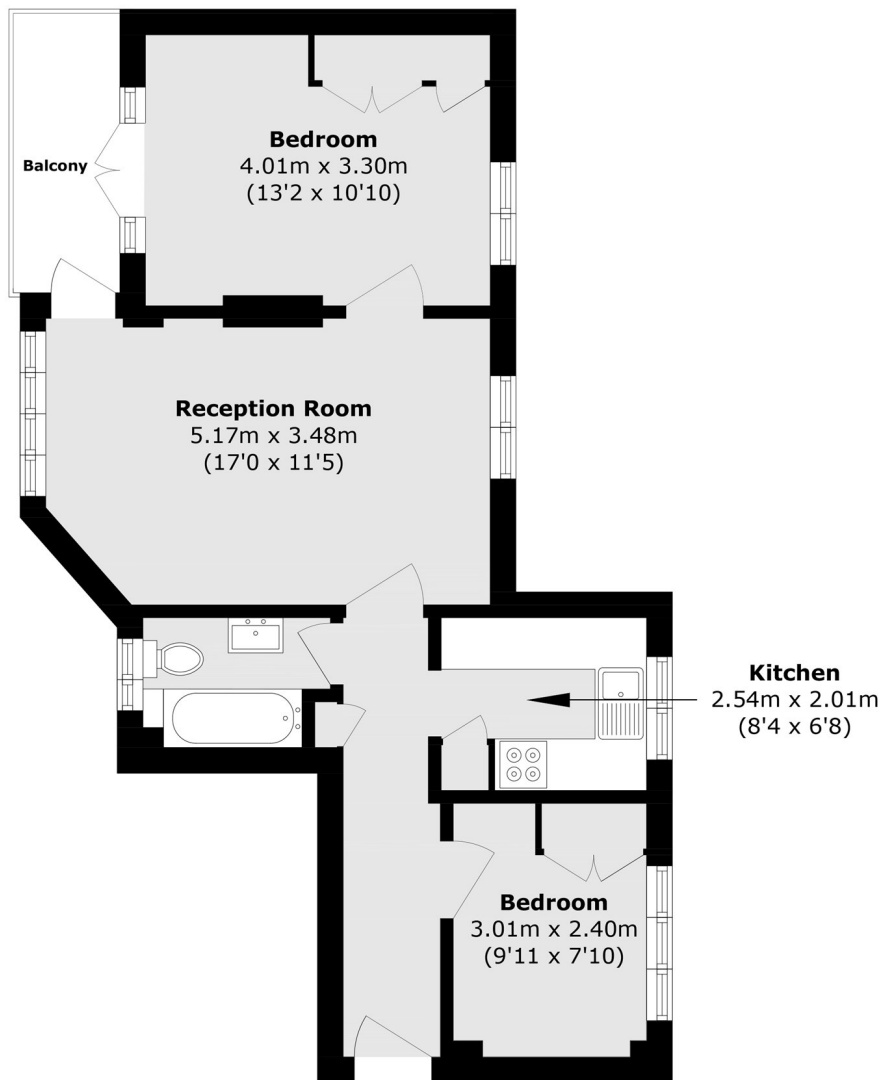
# ABOUT THE PROPERTY

Offered to the market with no onward chain, this beautifully presented two double bedroom fourth-floor apartment is ideally positioned within one of the area's most highly sought-after developments. Enjoying an elevated outlook, the property combines charm, space, and convenience, making it an exceptional opportunity for both homeowners and investors alike.

Chiswick Village is within half a mile of Gunnersbury Station (District & Overground), Kew Bridge Station (GWR) and the M4/A4 providing excellent access into and out of London.



# STEP INSIDE CHISWICK VILLAGE



Total area (approx.): 52.0 sq. m (559.7 sq. ft)  
Balcony area (approx.): 3.9 sq. m (41.9 sq. ft)

Chiswick  
020 8994 2556

Energy Rating: D We aim to make our particulars both accurate and reliable. However, they are not guaranteed; nor do they form part of an offer or contract. If you require clarification on any points then please contact us, especially if you're traveling some distance to view. Please note that appliances and heating systems have not been tested and therefore no warranties can be given as to their good working order

MARSH &  
PARSONS