



QUEEN'S CRESCENT, NW5

£580,000

Two bedrooms
Two bathrooms
Long lease
High ceiling
No onward chain
Terrace

@marshandparsons
marshandparsons.co.uk

MARSH &
PARSONS



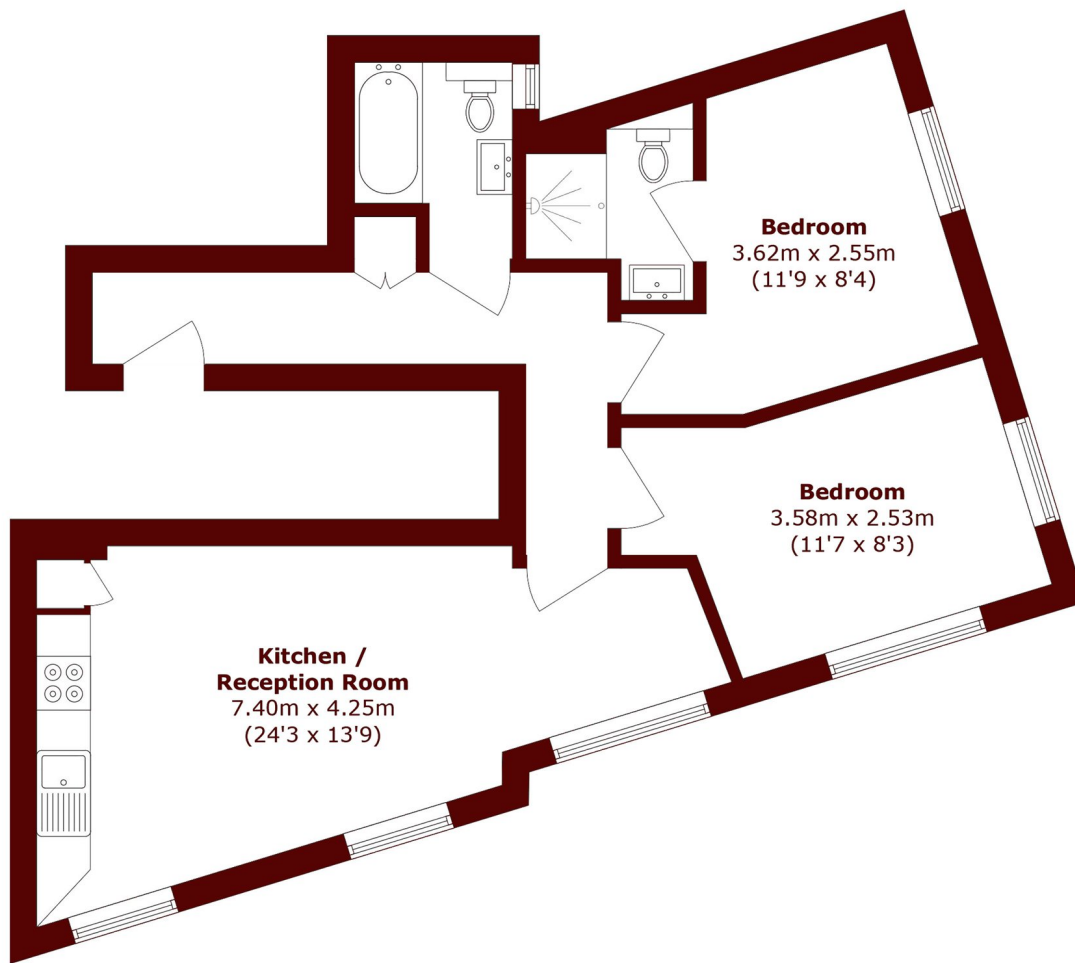
ABOUT THE PROPERTY

A beautifully presented two double bedroom, two bathroom first-floor apartment, finished to a high standard throughout. The property features a bright and spacious open-plan reception room and kitchen, enhanced by high ceilings and an abundance of windows that flood the space with natural light, creating a light and airy feel.

Queens Crescent is tucked away in a peaceful cul-de-sac, ideally located within easy reach of the vibrant shops, cafés and restaurants of both Belsize Park and Camden Town. Excellent transport links are available nearby, with Chalk Farm and Belsize Park Underground stations (Northern line) both within walking distance.



STEP INSIDE QUEEN'S CRESCENT



Total area (approx.): 60.3 sq. m (649.1 sq. ft)

Camden
020 7244 2200

Energy Rating: We aim to make our particulars both accurate and reliable. However, they are not guaranteed; nor do they form part of an offer or contract. If you require clarification on any points then please contact us, especially if you're traveling some distance to view. Please note that appliances and heating systems have not been tested and therefore no warranties can be given as to their good working order

MARSH &
PARSONS