



HARTFIELD CRESCENT, SW19

£2,750 per month

Two double bedrooms
Two bathrooms
Large reception
Separate kitchen
Underground parking
Energy rating: c

@marshandparsons
marshandparsons.co.uk

MARSH &
PARSONS



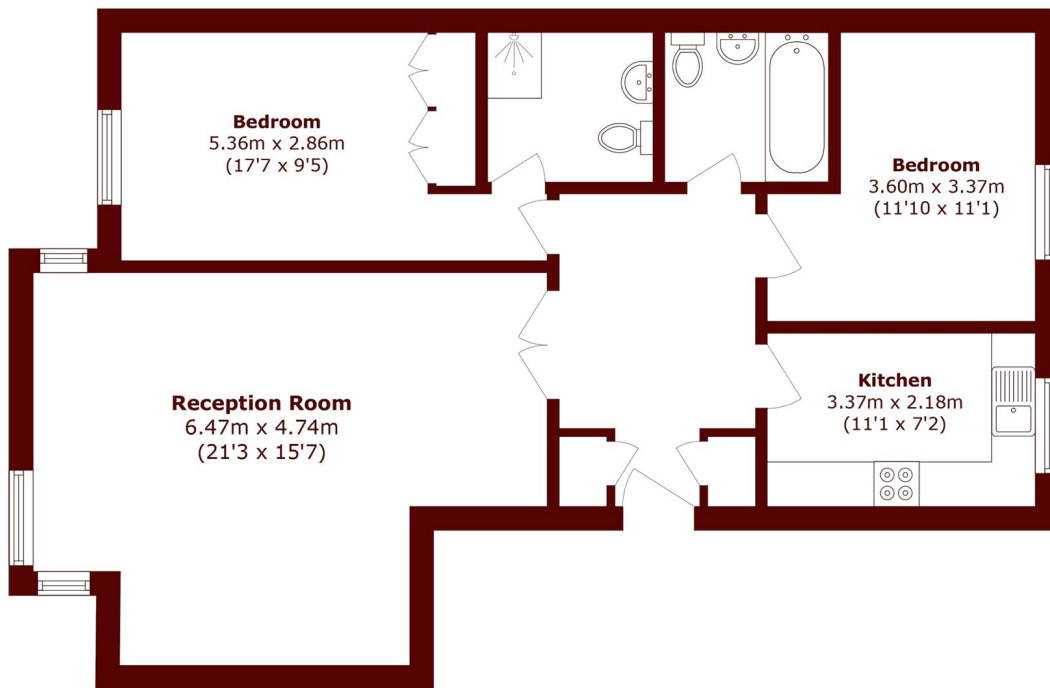
ABOUT THE PROPERTY

A spacious two double bedroom, two bathroom first floor apartment to let in a gated development very close to Wimbledon Station. This property also benefits from secure underground parking and communal gardens.

Located right in the heart of central Wimbledon offering quick and easy access to all of the shops, restaurants and pubs.



STEP INSIDE HARTFIELD CRESCENT



Total area (approx.): 79.9 sq. m (860.0 sq. ft)

Wimbledon
020 8879 6661

Energy Rating: C We aim to make our particulars both accurate and reliable. However, they are not guaranteed; nor do they form part of an offer or contract. If you require clarification on any points then please contact us, especially if you're traveling some distance to view. Please note that appliances and heating systems have not been tested and therefore no warranties can be given as to their good working order

MARSH &
PARSONS