



## Holyport Road, SW6

£1,295,000

 4  2  2  D

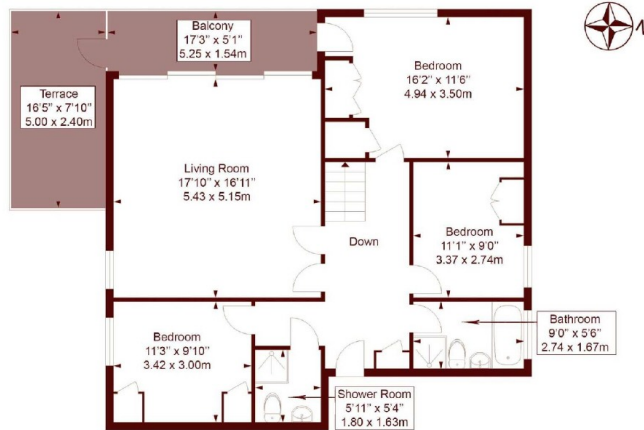
• Direct river views

• Private Garden

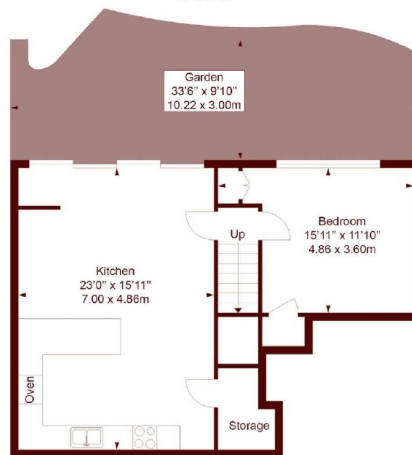
• Large contemporary kitchen

## Rosebank

APPROX. GROSS INTERNAL FLOOR AREA: 1617.3 SQFT / 150.2 SQM



### First Floor



### Ground Floor

Measured in accordance with RICS guidelines. Every attempt is made to ensure accuracy

However all measurements are approximate.

The floor plan is illustrative purposes only and is not to scale

ELLIE CLAIRE PHOTOGRAPHY LTD

[www.ellieclairephotography.com](http://www.ellieclairephotography.com)

## Marsh & Parsons Bishops Park

333 Fulham Palace Road,  
London, SW6 6TE  
020 7993 9888