



Noyna Road, SW17

£1,200,000

 5  4  2  C

- Five Bedrooms
- Four Bathrooms

- Fully Extended
- Modern Finish Throughout

- Private Rear Garden
- Fantastic Location





ABOUT THE PROPERTY

A stunning Victorian family home with a modern interior and five bedrooms split over three floors.

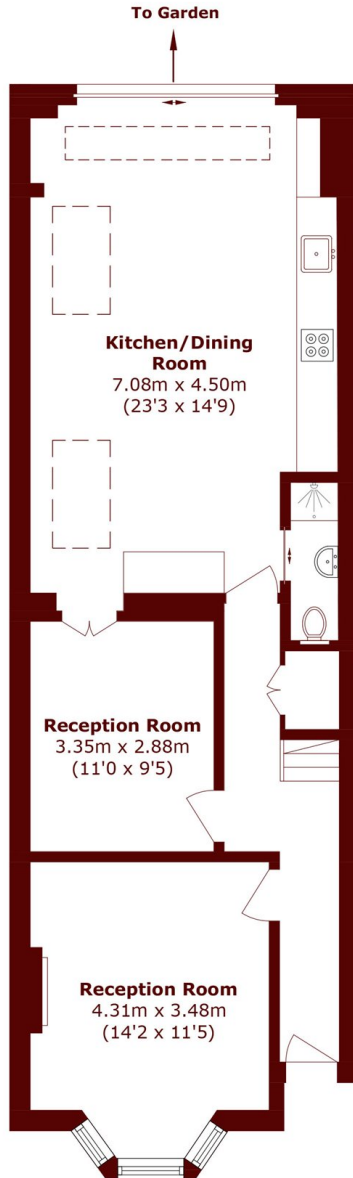
This fully extended property comes to the market offering a blend of period features and contemporary living throughout. The ground floor makes the perfect living space with two reception rooms to the front of the property with an extended open plan kitchen/dining area to the rear. Boasting parquet flooring and a contemporary fitted kitchen as well as multiple skylights and large bi folding doors which let it in an abundance of light. The private rear garden has been partly decked with a built in seating area with storage. The ground floor has a downstairs shower room.



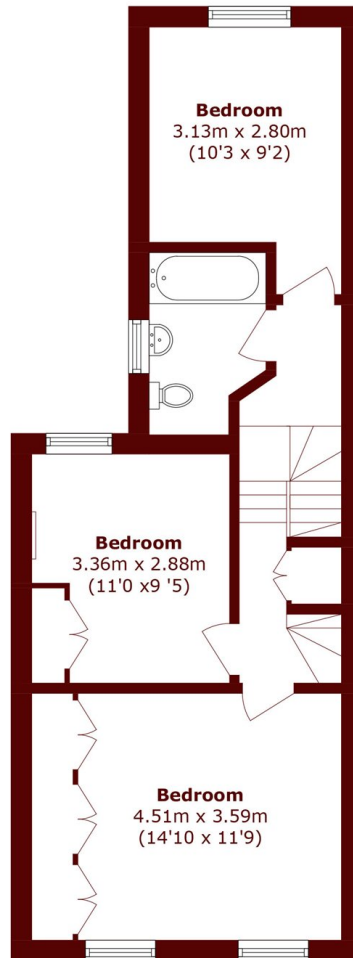
Three double bedrooms and a family bathroom can be found on the first floor, while a further two bedrooms are located on the second floor, both of which have en suite bathrooms.

Noyna Road is a beautiful residential road set moments from the open spaces of Tooting Bec Common. Local amenities are in abundance, and local bus routes as well as Tooting Bec Station (Northern line, Zone 3) offer frequent access into and out of the City.

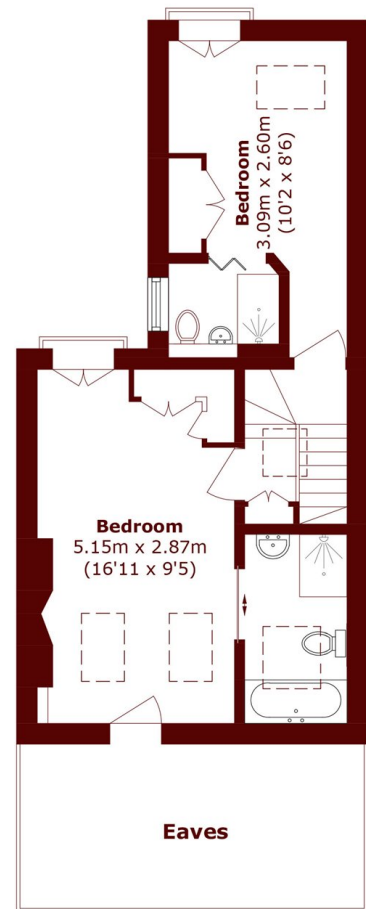




Ground Floor



First Floor



Second Floor

Total area (approx.): 150.8 sq. m (1623.2 sq. ft)
(Excluding Eaves)

Marsh & Parsons Tooting
29-31 Upper Tooting Road,
London, SW17 7TS
020 8767 3655

We aim to make our particulars both accurate and reliable. However, they are not guaranteed; nor do they form part of an offer or contract. If you require clarification on any points then please contact us, especially if you're traveling some distance to view. Please note that appliances and heating systems have not been tested and therefore no warranties can be given as to their good working order.