



GORDON ROAD, W4

£298,000

Purpose-Built
One Bedroom
Separate Kitchen
Communal Garden
Close To Transport & River
No Onward Chain

@marshandparsons
marshandparsons.co.uk

MARSH &
PARSONS



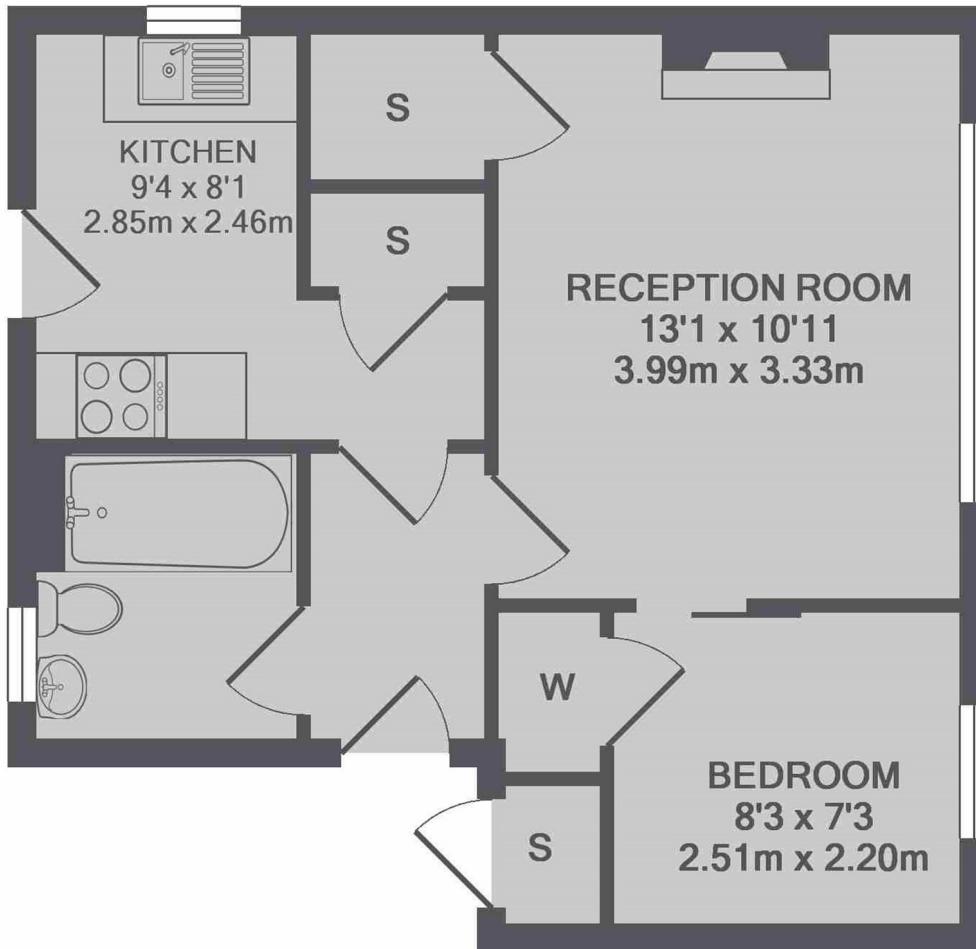
ABOUT THE PROPERTY

A one bedroom apartment on the ground floor of this purpose-built block in the heart of Grove Park. With separate kitchen, direct access to a shared garden and no onward chain.

Gordon Road offers easy access to the A4 for the motorist and the amenities on Fauconberg Village. Both Chiswick mainline and Gunnersbury stations are within half a mile



STEP INSIDE GORDON ROAD



TOTAL APPROX. FLOOR AREA 406 SQ.FT. (37.7 SQ.M.)

Chiswick
020 8994 2556

Energy Rating: D We aim to make our particulars both accurate and reliable. However, they are not guaranteed; nor do they form part of an offer or contract. If you require clarification on any points then please contact us, especially if you're traveling some distance to view. Please note that appliances and heating systems have not been tested and therefore no warranties can be given as to their good working order

MARSH &
PARSONS