



## DUMBRECK ROAD, SE9

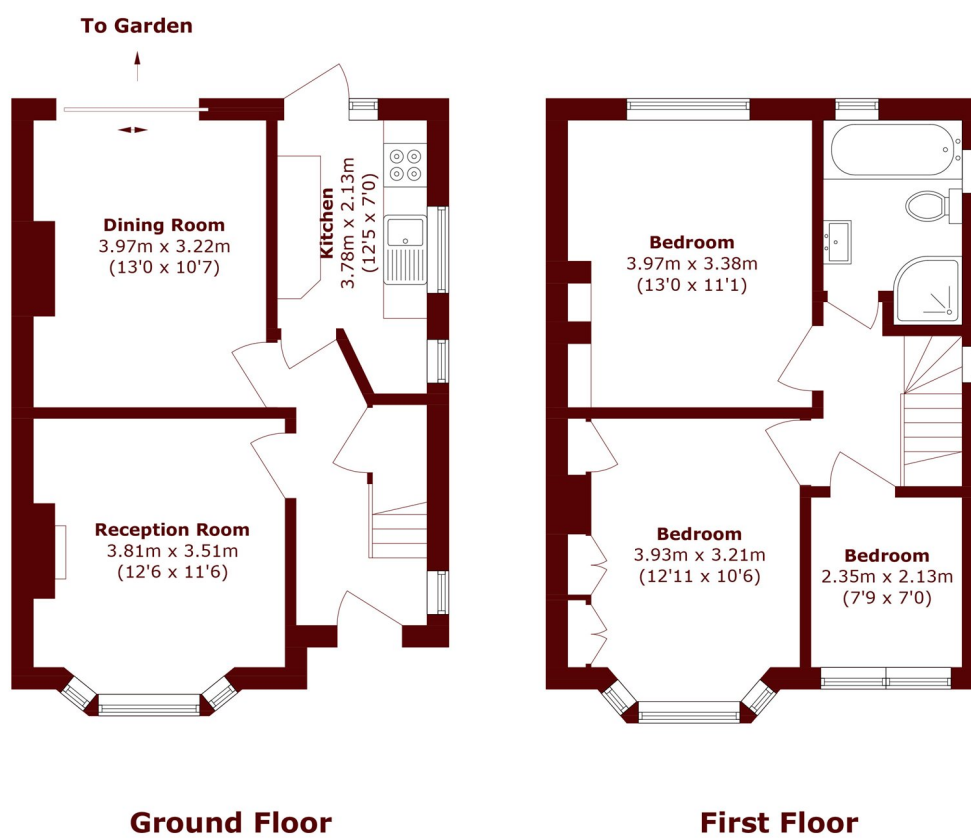
£2,300 per month

An attractive semi-detached house offering ample space for families looking to rent in the Eltham area.

Three bedroom semi  
Living/dining room  
Fitted kitchen

Two double bedrooms  
Private front and rear gardens  
Energy rating: d

# STEP INSIDE DUMBRECK ROAD



Total area (approx.): 82.7 sq. m (890.1 sq. ft)

Lee  
020 8296 1628

Energy Rating: D We aim to make our particulars both accurate and reliable. However, they are not guaranteed; nor do they form part of an offer or contract. If you require clarification on any points then please contact us, especially if you're traveling some distance to view. Please note that appliances and heating systems have not been tested and therefore no warranties can be given as to their good working order

MARSH &  
PARSONS