



PAVILION SQUARE, SW17

£1,175,000

Four Bedrooms
Gated Development
Driveway
Garage
Private Garden
Three Bathrooms

@marshandparsons
marshandparsons.co.uk

MARSH &
PARSONS

ABOUT THE PROPERTY

This stunning four bed town house is arranged over three floors and boasts in excess of 1900 sqft. Forming part of the exclusive Pavilion Square. A private gated square set away from the road with communal gardens and off-street parking.

The ground floor has a large entrance hall and garage to the front of the property, WC and an impressive kitchen/diner with double doors leading to the private garden. The master bedroom with a walk in wardrobe and en-suite can be found on the first floor as well as a large living room which can also be used as a bedroom. The second floor boasts two further double bedrooms, both with en-suites and one with a walk in wardrobe.

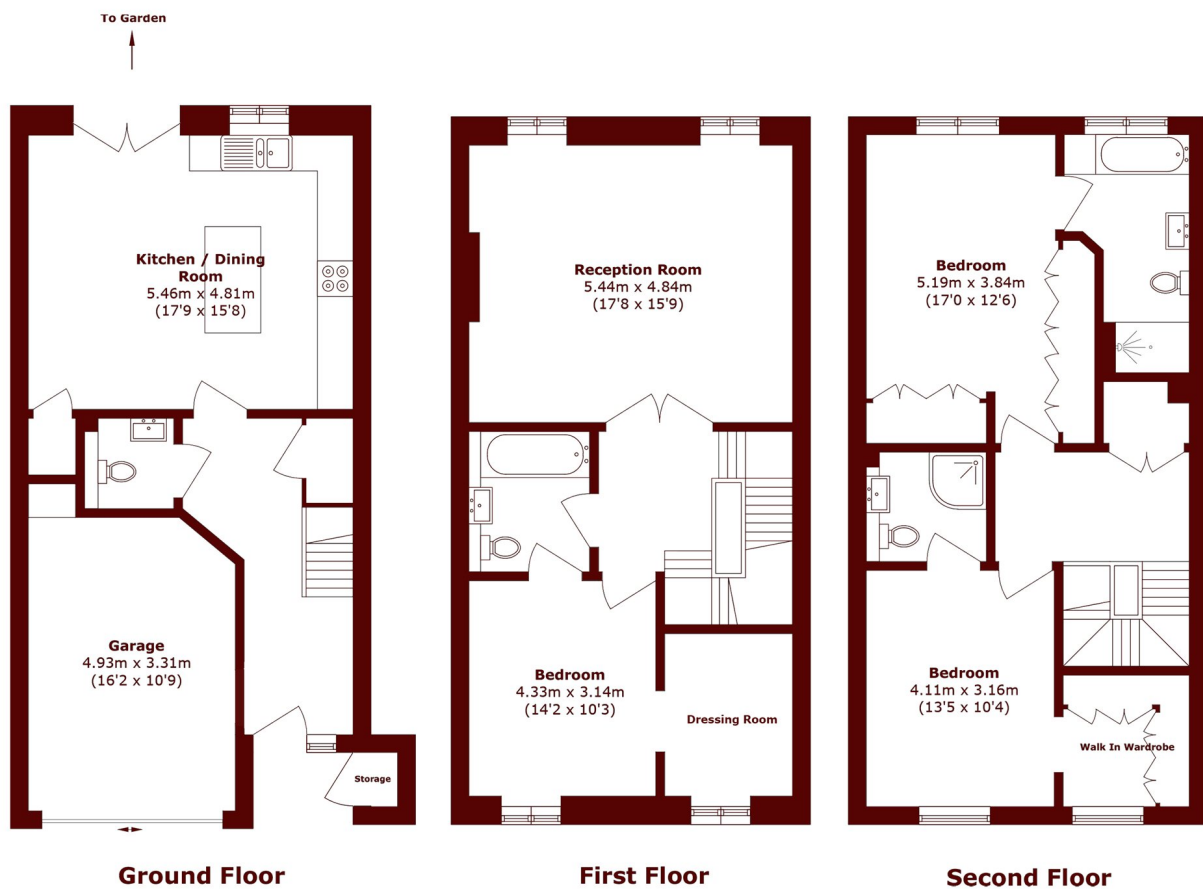








STEP INSIDE PAVILION SQUARE



Total area (approx.): 183.4 sq. m (1974.1 sq. ft)
(Including Garage)
External Storage area (approx.): 0.4 sq. m (4.3 sq. ft)

Tooting
020 8767 3655

Energy Rating: We aim to make our particulars both accurate and reliable. However, they are not guaranteed; nor do they form part of an offer or contract. If you require clarification on any points then please contact us, especially if you're traveling some distance to view. Please note that appliances and heating systems have not been tested and therefore no warranties can be given as to their good working order

**MARSH &
PARSONS**