



## Hunts Paper Factory, SW6

£3,250 per week ( pcm)



• Two double bedrooms

• Two bathrooms

• Warehouse style









## ABOUT THE PROPERTY

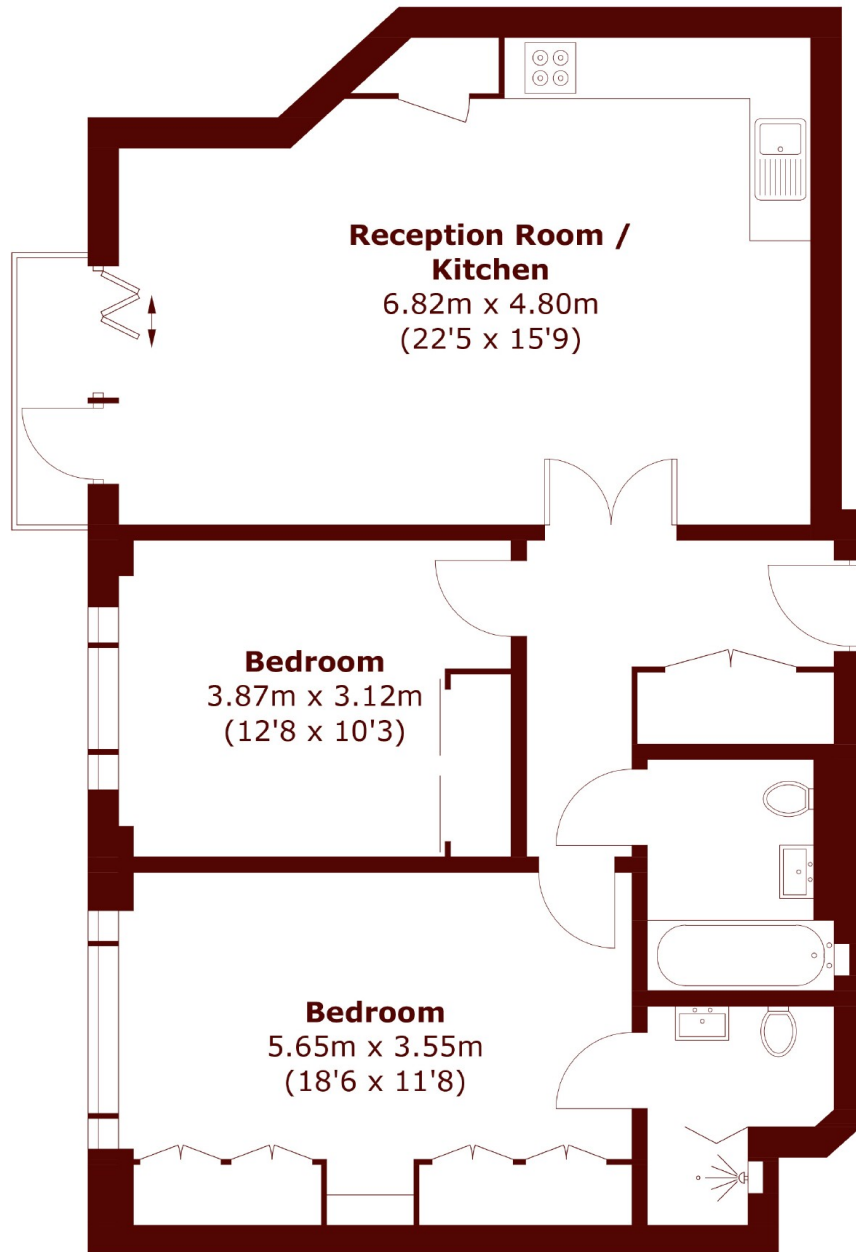
This immaculate two double bedroom apartment offers contemporary living in a stunning restored and converted Factory tucked in the corner of a tree-lined street in Fulham. The apartment offers a high specification finish, fantastic warehouse living and comprises of a large open-plan kitchen/reception room with beautiful wood flooring and contemporary kitchen, great sized master bedroom with excellent storage and en suite, second generous double bedroom and an additional well-appointed bathroom. The property further benefits from a balcony and an abundance of natural light.



Hunts Paper Factory is ideally located a short walk from both Fulham Palace Road and Munster Road for amenities. The open spaces of Bishops Park are close by and Putney Bridge Station (District Line) and Parsons Green (District Line) is within easy reach for commuters.

Council Tax Band - E





Total area (approx.): 78.6 sq. m (846.0 sq. ft)

## Marsh & Parsons Bishops Park

333 Fulham Palace Road,  
London, SW6 6TE  
020 7993 9888

We aim to make our particulars both accurate and reliable. However, they are not guaranteed; nor do they form part of an offer or contract. If you require clarification on any points then please contact us, especially if you're traveling some distance to view. Please note that appliances and heating systems have not been tested and therefore no warranties can be given as to their good working order.