



FOXWELL MEWS, SE4

£250,000

One bedroom apartment with parking
Modern apartment
Cul-de-sac location
Low service charge
Two minute walk to Brockley station
EPC rating: D

@marshandparsons
marshandparsons.co.uk

MARSH &
PARSONS



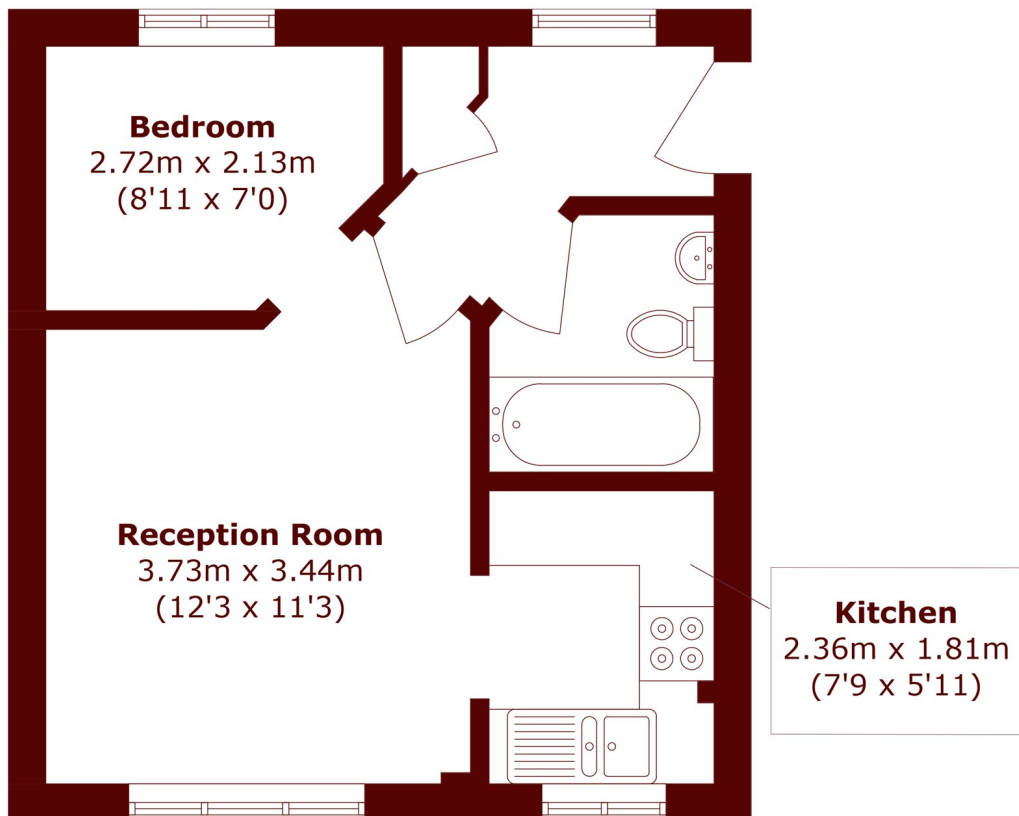
ABOUT THE PROPERTY

Modern 1 bedroom apartment with designated parking and in excellent internal condition, within a two minute walk of Brockley station.

Foxwell Mews is ideally positioned just a two-minute walk from Brockley Station, offering excellent transport links into Central London in approximately 15 minutes door to door. The property also benefits from close proximity to the heart of Brockley Village, just a few minutes further on foot, where residents can enjoy a vibrant selection of independent cafés, shops, and local amenities, all contributing to the area's strong community feel.



STEP INSIDE FOXWELL MEWS



Total area (approx.): 31.9 sq. m (343.3 sq. ft)

Brockley
020 8629 8164

Energy Rating: We aim to make our particulars both accurate and reliable. However, they are not guaranteed; nor do they form part of an offer or contract. If you require clarification on any points then please contact us, especially if you're traveling some distance to view. Please note that appliances and heating systems have not been tested and therefore no warranties can be given as to their good working order

**MARSH &
PARSONS**