



# THAMES STREET, SE10

£350,000

Spacious apartment  
Fourth floor  
Three bedrooms  
Off-street parking  
Views of River Thames  
Energy rating: d

@marshandparsons  
marshandparsons.co.uk

MARSH &  
PARSONS



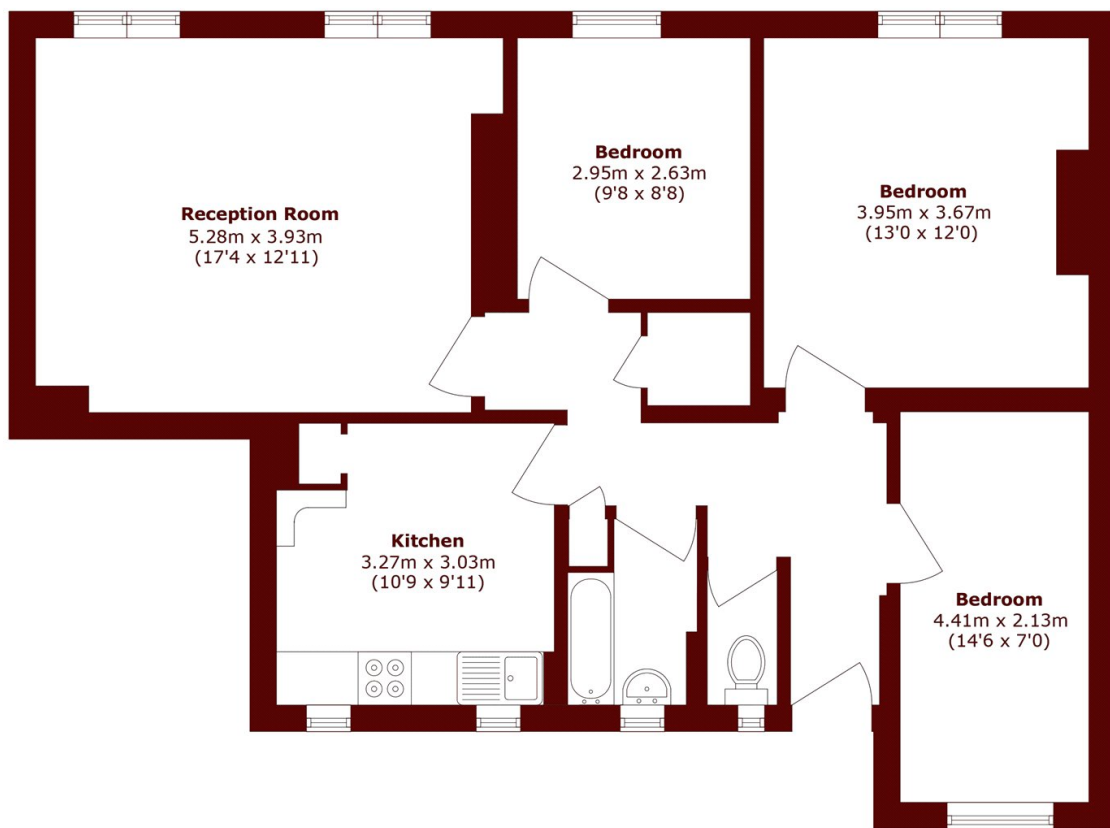
# ABOUT THE PROPERTY

A very spacious purpose built apartment, located on the fourth floor and offering direct views of the river Thames. Inside the property you will find a very spacious living room, kitchen/diner, bathroom suite with separate W.C and three bedrooms. Further stand out features include double glazed windows, some of which are sash style, gas central heating, combi boiler which has been serviced and ample storage.

Greenwich town centre is a very short walk away, where you will find Greenwich pier, for river taxi services, the covered market and the Royal Naval college. You will also find Greenwich's royal park and mainline and DLR stations within a very short walking distance.



# STEP INSIDE THAMES STREET



Total area (approx.): 82.0 sq. m (882.6 sq. ft)

Greenwich  
020 8312 8312

Energy Rating: D We aim to make our particulars both accurate and reliable. However, they are not guaranteed; nor do they form part of an offer or contract. If you require clarification on any points then please contact us, especially if you're traveling some distance to view. Please note that appliances and heating systems have not been tested and therefore no warranties can be given as to their good working order

MARSH &  
PARSONS