



LORD ROBERTS MEWS, SW6

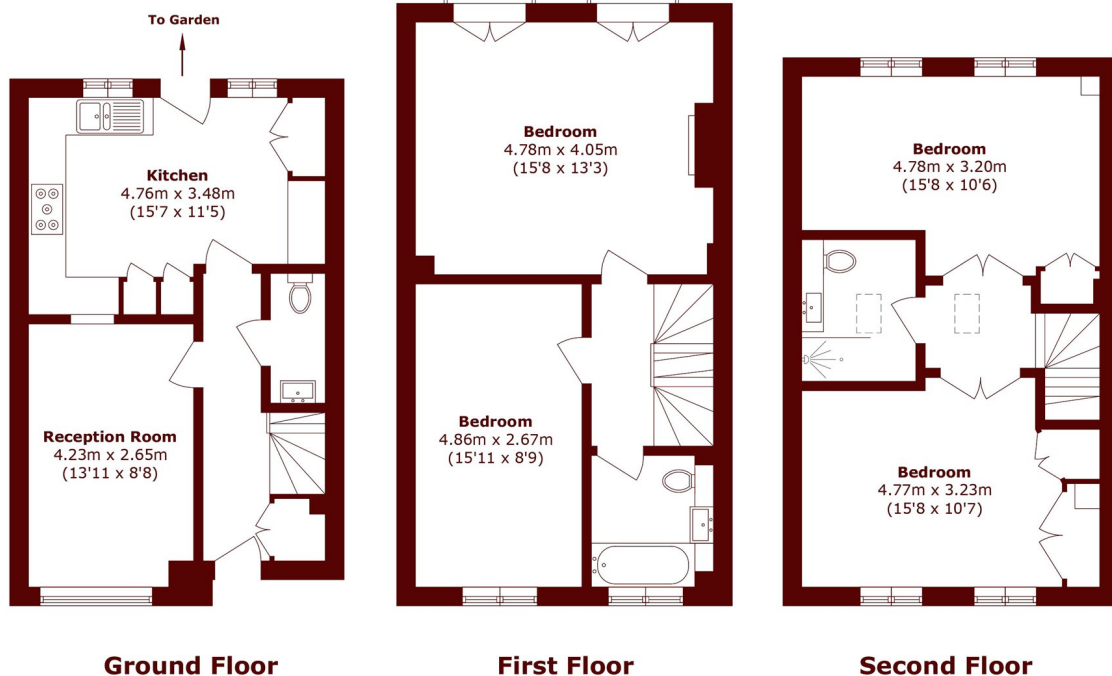
£1,200,000

A beautifully presented four double bedroom freehold house set within a private gated development in the highly sought after Moore Park Estate, specifically within Lord Robert's Mews.

Private gated development
Freehold
Four double bedrooms

Close to tube
Private garage
Energy rating: c

STEP INSIDE LORD ROBERTS MEWS



Ground Floor

First Floor

Second Floor

Total area (approx.): 118.9 sq. m (1279.8 sq. ft)

Fulham
020 7736 9822

Energy Rating: C We aim to make our particulars both accurate and reliable. However, they are not guaranteed; nor do they form part of an offer or contract. If you require clarification on any points then please contact us, especially if you're traveling some distance to view. Please note that appliances and heating systems have not been tested and therefore no warranties can be given as to their good working order

**MARSH &
PARSONS**