



## COOMBE LANE, SW20

£1,525 per month

One double bedroom  
New build  
Private balcony  
Open plan kitchen  
Pet friendly  
Energy rating: d

@marshandparsons  
marshandparsons.co.uk

MARSH &  
PARSONS



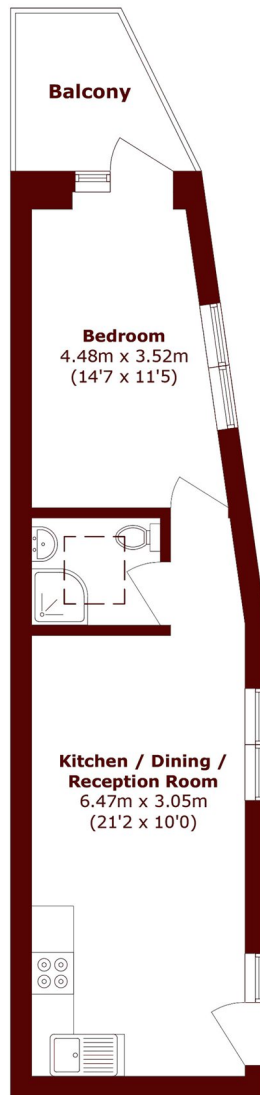
# ABOUT THE PROPERTY

A one double bedroom new build apartment offering an open plan kitchen/reception room, double bedroom, bathroom and private balcony.

The property is located close to Raynes Park station.



# STEP INSIDE COOMBE LANE



Total area (approx.): 35.8 sq. m (385.3 sq. ft)

Balcony area (approx.): 5.0 sq. m (16.4 sq. ft)

Wimbledon  
020 8879 6661

Energy Rating: D We aim to make our particulars both accurate and reliable. However, they are not guaranteed; nor do they form part of an offer or contract. If you require clarification on any points then please contact us, especially if you're traveling some distance to view. Please note that appliances and heating systems have not been tested and therefore no warranties can be given as to their good working order

MARSH &  
PARSONS