



NEVERN PLACE, SW5

£3,900 per month

Two Double Bedrooms

Two Bathrooms

Furnished

Great Storage

Excellent Location

700sqft

@marshandparsons
marshandparsons.co.uk

MARSH &
PARSONS

ABOUT THE PROPERTY

A beautifully presented two-bedroom, two-bathroom apartment situated on the second floor of a charming period building in the heart of Nevern Place. Bright and airy throughout, the property enjoys excellent natural light, generous living space, a fully equipped modern kitchen, ample storage, and two well-proportioned double bedrooms, making it ideal for both professional sharers and couples. Offered fully furnished and finished to a high standard, the apartment combines comfort, style, and practicality.

Ideally located just moments from the station, with an excellent selection of cafés, restaurants, supermarkets, and local amenities nearby, while Kensington High Street

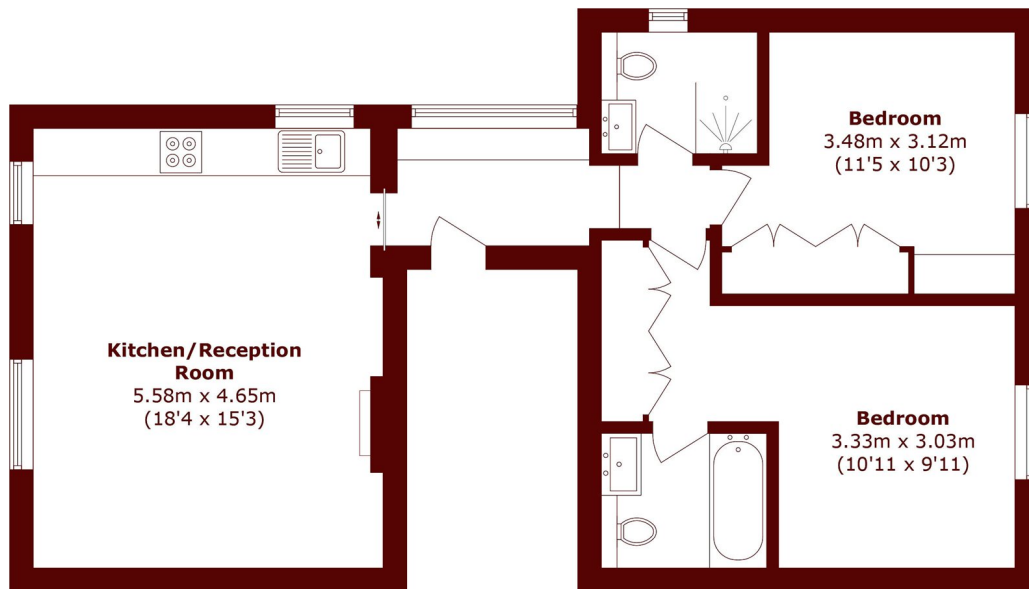








STEP INSIDE NEVERN PLACE



Second Floor

Total area (approx.): 65.7 sq. m (707.1 sq. ft)

Earls Court
020 7835 0620

Energy Rating: We aim to make our particulars both accurate and reliable. However, they are not guaranteed; nor do they form part of an offer or contract. If you require clarification on any points then please contact us, especially if you're traveling some distance to view. Please note that appliances and heating systems have not been tested and therefore no warranties can be given as to their good working order

**MARSH &
PARSONS**