

COOKHAM CRESCENT, SE16

£5,000 per month

Canalside development

Beautifully presented

Generous proportions

Four bedrooms

Three bathrooms

Private garden



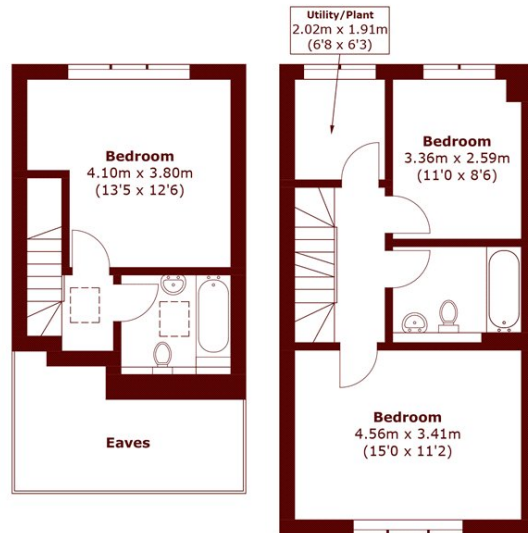
ABOUT THE PROPERTY

Offering generous proportions and lots of natural light, the open plan kitchen, dining, and reception area serves as the heart of the home. It features a contemporary kitchen, with high quality fixtures, and a bright reception area that blends effortlessly into the private garden.

The home boasts four spacious bedrooms, including a stunning principal suite with its own three-piece bathroom. Two additional bathrooms and a separate WC are conveniently placed throughout. Practicality is further enhanced by the first floor study and second floor utility room.

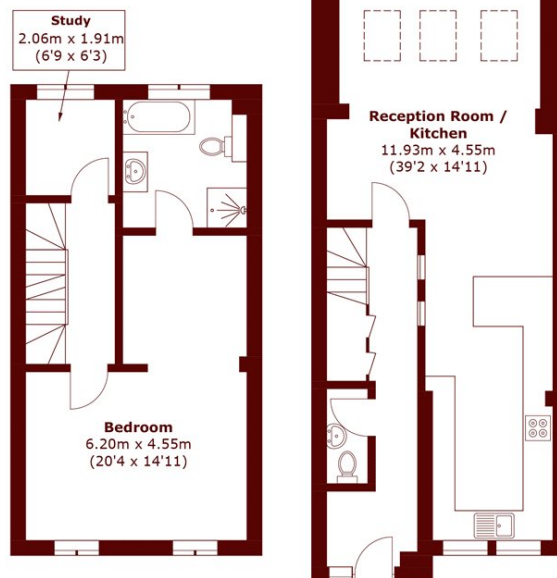


STEP INSIDE COOKHAM CRESCENT



Third Floor

Second Floor



First Floor

Ground Floor

Total area (approx.): 157.0 sq. m (1689.9 sq. ft)
(Excluding Eaves)

Kennington
020 7932 2920

Energy Rating: C We aim to make our particulars both accurate and reliable. However, they are not guaranteed; nor do they form part of an offer or contract. If you require clarification on any points then please contact us, especially if you're traveling some distance to view. Please note that appliances and heating systems have not been tested and therefore no warranties can be given as to their good working order

**MARSH &
PARSONS**