



GROSVENOR ROAD, SW1V

£1,300,000

Secure underground parking

Stunning condition

24-hour concierge

Spectacular views

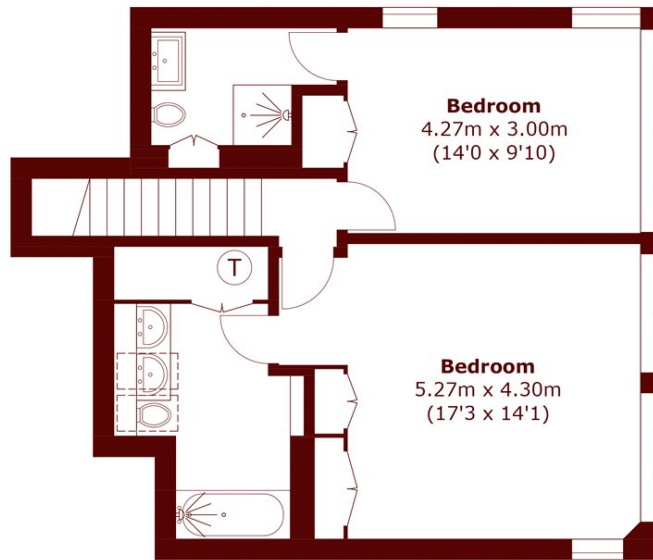


ABOUT THE PROPERTY

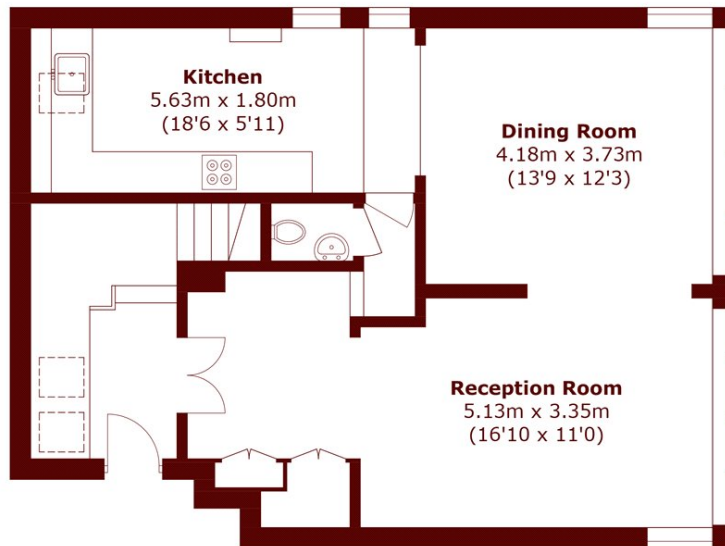
Set over the first and second floors of this iconic and well-established riverside development, is this fantastic two-bedroom two-bathroom detached maisonette, ideally set within its own impeccably kept residents' gardens. Entering the main foyer, you immediately notice the warm and inviting ambience, and this continues throughout the complex, ensuring residents enjoy peace and tranquillity. Accommodation extends to over 1300 sqft, briefly comprising a bright open plan reception, with a cleverly designed Kitchen area and separate w/c on the first floor, with two-bedrooms and two quality bathrooms on the second floor. Most rooms enjoy truly breathtaking views out towards the river Thames and across to Vauxhall Bridge, as well as the lovely green vista over



STEP INSIDE GROSVENOR ROAD



Second Floor



First Floor

Total area (approx.): 124.6 sq. m (1,341.2 sq. ft)

Pimlico & Westminster
020 7590 0800

Energy Rating: We aim to make our particulars both accurate and reliable. However, they are not guaranteed; nor do they form part of an offer or contract. If you require clarification on any points then please contact us, especially if you're traveling some distance to view. Please note that appliances and heating systems have not been tested and therefore no warranties can be given as to their good working order

**MARSH &
PARSONS**