



ATKINSON CLOSE, SW20

£800,000

Modern development

Two bedrooms

Parking space

Terrace

Communal gardens

Energy rating: b

ABOUT THE PROPERTY

A stylish and modern two bedroom, two bathroom apartment designed to a smart contemporary finish, offering open plan living and set amongst well manicured landscaped gardens.

Atkinson Close is located off Copse Hill with easy access to Wimbledon Village, the Common and the many shopping and transport amenities of Wimbledon town.





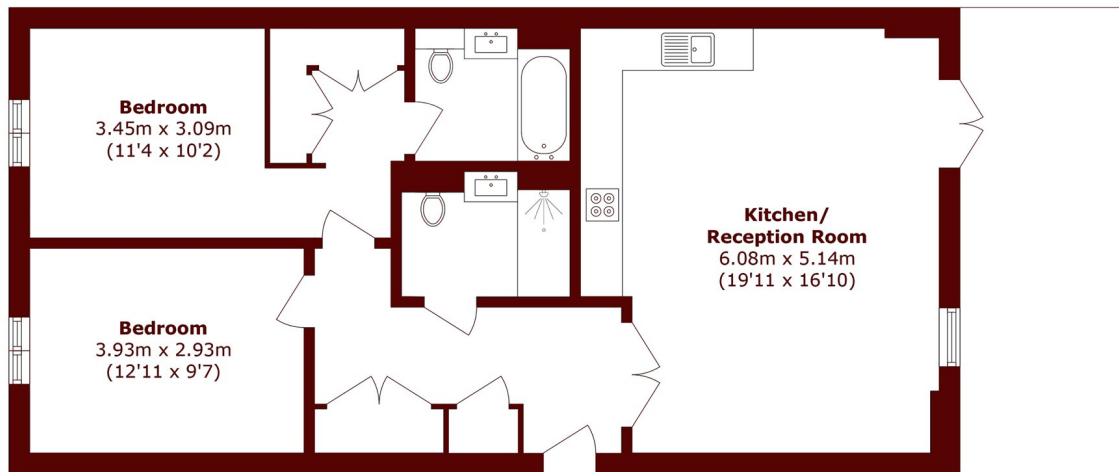


FURTHER DETAILS

The accommodation centres around a bright and spacious open-plan living/kitchen/dining room, with doors opening onto a private terrace. The principal bedroom features a walk-in dressing area and en suite shower room, complemented by a further double bedroom and separate shower room/WC. Residents also benefit from beautifully landscaped communal grounds, underground parking, a private gym and an on-site cinema.



STEP INSIDE ATKINSON CLOSE



Total area (approx.): 79.2 sq. m (852.5 sq. ft)

Wimbledon
020 8879 6660

Energy Rating: B We aim to make our particulars both accurate and reliable. However, they are not guaranteed; nor do they form part of an offer or contract. If you require clarification on any points then please contact us, especially if you're traveling some distance to view. Please note that appliances and heating systems have not been tested and therefore no warranties can be given as to their good working order

MARSH &
PARSONS