



CHISWICK HIGH ROAD, W4

£3,100 per month

Two bedrooms
Two bathrooms
Roof terrace
Ample storage
Open plan living
Energy rating: c

@marshandparsons
marshandparsons.co.uk

MARSH &
PARSONS



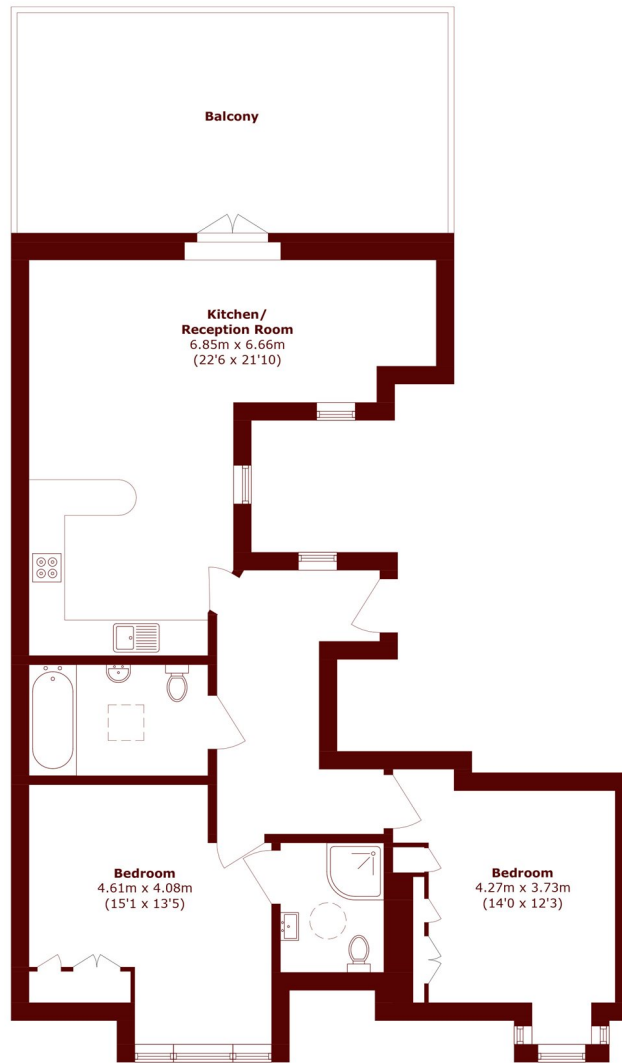
ABOUT THE PROPERTY

A beautiful two-bedroom, two-bathroom apartment in the heart of Chiswick. The property offers two double-sized bedrooms with one family bathroom, and an ensuite. A large entertaining open plan living and dining space which leads out to a large, impressive roof terrace. There is also a wealth of storage offered throughout the property.

The property is perfectly situated moments from the Stamford Brook Station and Turnham Green Station, and you are just a stone's throw from the charming Ravenscourt Park.



STEP INSIDE CHISWICK HIGH ROAD



Third Floor

Total area (approx.): 86.3 sq. m (928.9 sq. ft)
Balcony area (approx.): 27.8 sq. m (299.2 sq. ft)

Chiswick
020 8629 0900

Energy Rating: C We aim to make our particulars both accurate and reliable. However, they are not guaranteed; nor do they form part of an offer or contract. If you require clarification on any points then please contact us, especially if you're traveling some distance to view. Please note that appliances and heating systems have not been tested and therefore no warranties can be given as to their good working order

MARSH &
PARSONS