



## THE VISTA BUILDING, SE18

£2,700 PCM

A split-level apartment featuring three bedrooms, two bathrooms, a private balcony and secure parking. Enjoy panoramic views across the Thames and Docklands, a bright contemporary open plan living area, and

10th floor apartment

Three double bedrooms

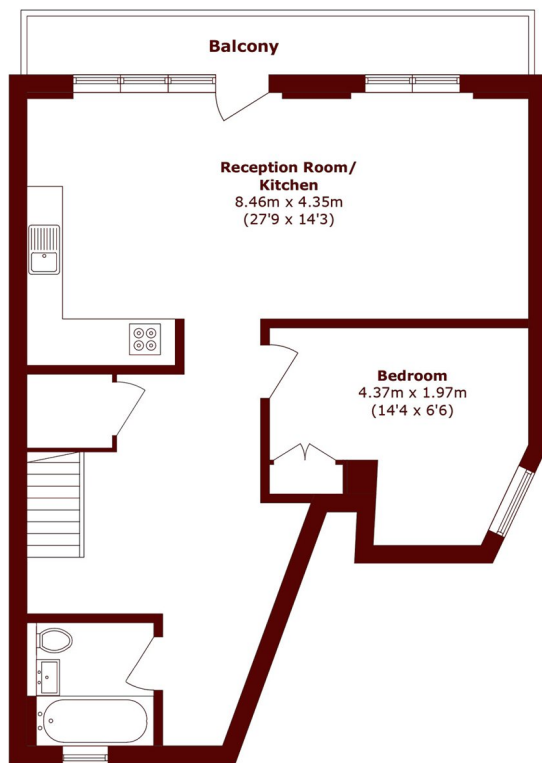
Two bathrooms

Private balcony

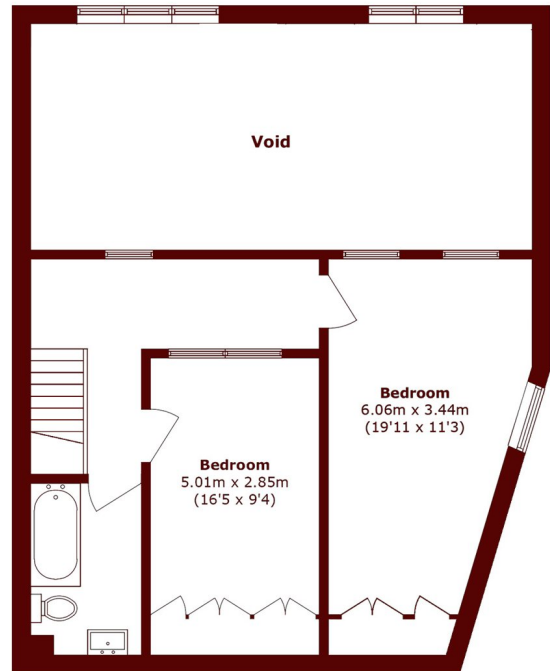
Parking

Energy rating: c

# STEP INSIDE THE VISTA BUILDING



**Tenth Floor**



**Eleventh Floor**

Total area (approx.): 129.1 sq. m (1389.6 sq. ft)  
(excluding void)  
Balcony area (approx.): 8.3 sq. m (89.3 sq. ft)

**Charlton**  
020 8293 0454

Energy Rating: C We aim to make our particulars both accurate and reliable. However, they are not guaranteed; nor do they form part of an offer or contract. If you require clarification on any points then please contact us, especially if you're traveling some distance to view. Please note that appliances and heating systems have not been tested and therefore no warranties can be given as to their good working order

**MARSH &  
PARSONS**