



MONTAGU MANSIONS, W1U

£1,800,000

This spacious apartment finished to a high specification throughout with high ceilings and masses of natural light. Situated on the second floor (with lift), this apartment comprises a large entrance hall leading to the

Two double bedrooms

Two bathrooms

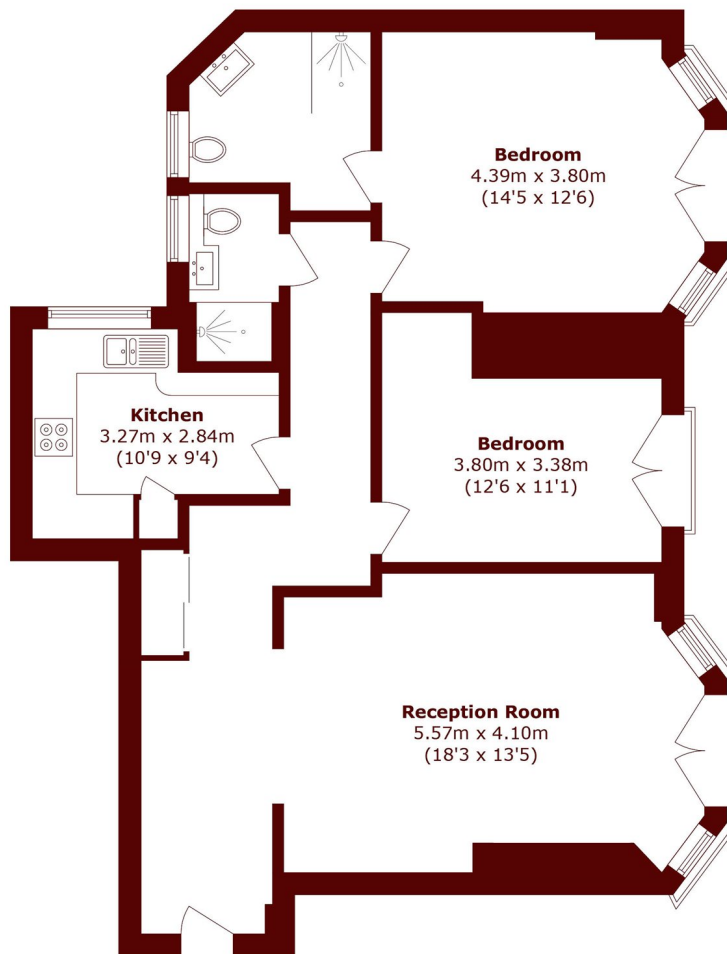
Long lease

Porter

Mansion block

Prime location

STEP INSIDE MONTAGU MANSIONS



Second Floor

Total area (approx.): 85.9 sq. m (924.6 sq. ft)

Marylebone & Mayfair
020 7935 1775

Energy Rating: C We aim to make our particulars both accurate and reliable. However, they are not guaranteed; nor do they form part of an offer or contract. If you require clarification on any points then please contact us, especially if you're traveling some distance to view. Please note that appliances and heating systems have not been tested and therefore no warranties can be given as to their good working order

MARSH &
PARSONS