



RIDGWAY PLACE, SW19

£4,500 per month

New build house
Three double bedrooms
Two bathrooms
Driveway
Roof terrace
Energy rating: c

@marshandparsons
marshandparsons.co.uk

MARSH &
PARSONS



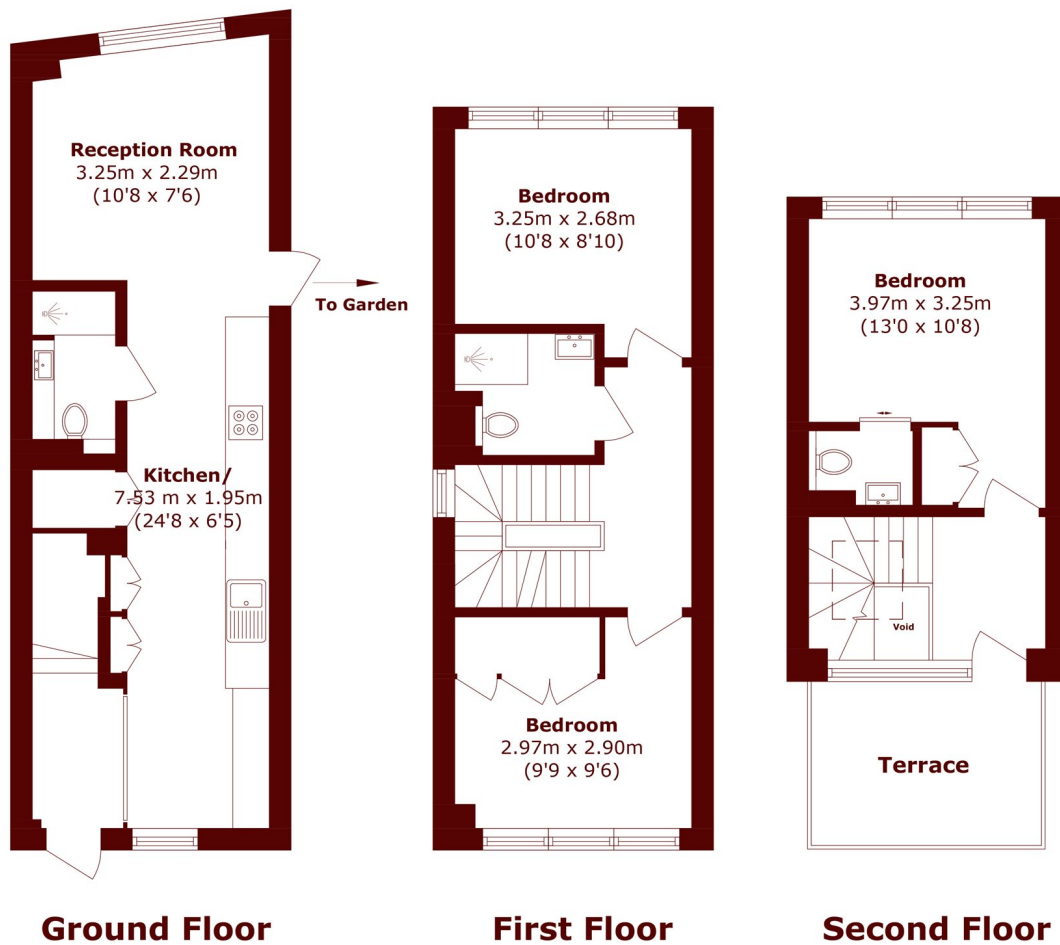
ABOUT THE PROPERTY

A brand new three bedroom, two bathroom house available to let on the 'slopes' on Wimbledon. This immaculate property has a roof terrace with great views, driveway parking, downstairs cloakroom and a full integrated kitchen.

Located within quick and easy reach of Wimbledon Village and the Town Centre.



STEP INSIDE RIDGWAY PLACE



Total area (approx.): 85.1 sq. m (918.2 sq. ft)
Terrace Total (approx.): 7.5 sq. m (80.7 sq. ft)
(Excluding Void)

Wimbledon
020 8879 6661

Energy Rating: C We aim to make our particulars both accurate and reliable. However, they are not guaranteed; nor do they form part of an offer or contract. If you require clarification on any points then please contact us, especially if you're traveling some distance to view. Please note that appliances and heating systems have not been tested and therefore no warranties can be given as to their good working order

MARSH &
PARSONS