



COLOSSEUM TERRACE, NW1

£750,000

Private garden
Close to Regents Park
Excellent transport links
Two double bedrooms
Two bathrooms
Separate office space

@marshandparsons
marshandparsons.co.uk

MARSH &
PARSONS



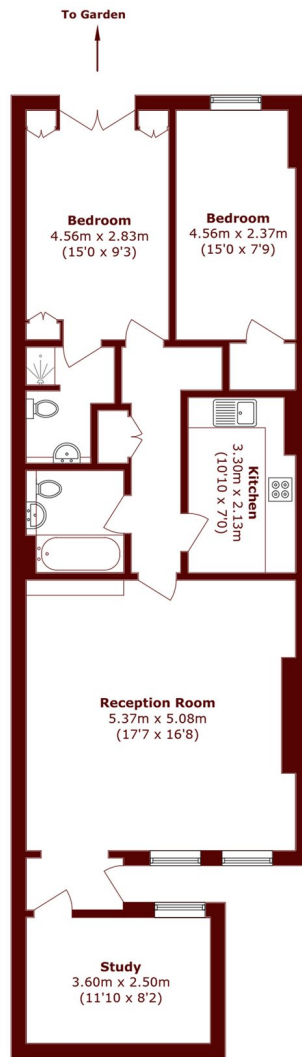
ABOUT THE PROPERTY

A well-presented two double bedroom, two bathroom apartment in great condition. The property offers a spacious and bright reception room, a separate study ideal for home working, and a well kept private garden. This property is offered with no onward chain.

Ideally situated close to Regent's Park and Primrose Hill, with a wide range of local amenities, cafés, restaurants, and shops nearby. This is within easy reach of Great Portland Street, Warren Street, Camden Town, Mornington Crescent, and Regent's Park stations, providing excellent connections across Central London.



STEP INSIDE COLOSSEUM TERRACE



Lower Ground Floor

Total Area (approx.): 90.4 sq. m (973.0 sq. ft)

Camden
020 7244 2200

Energy Rating: D We aim to make our particulars both accurate and reliable. However, they are not guaranteed; nor do they form part of an offer or contract. If you require clarification on any points then please contact us, especially if you're traveling some distance to view. Please note that appliances and heating systems have not been tested and therefore no warranties can be given as to their good working order

MARSH &
PARSONS