



BRIXTON HILL, SW2

£425,000

Private Balcony
One Double Bedroom
Open Plan Living
Spectacular Views
Convenient Central Location
Sought After Development

@marshandparsons
marshandparsons.co.uk

MARSH &
PARSONS



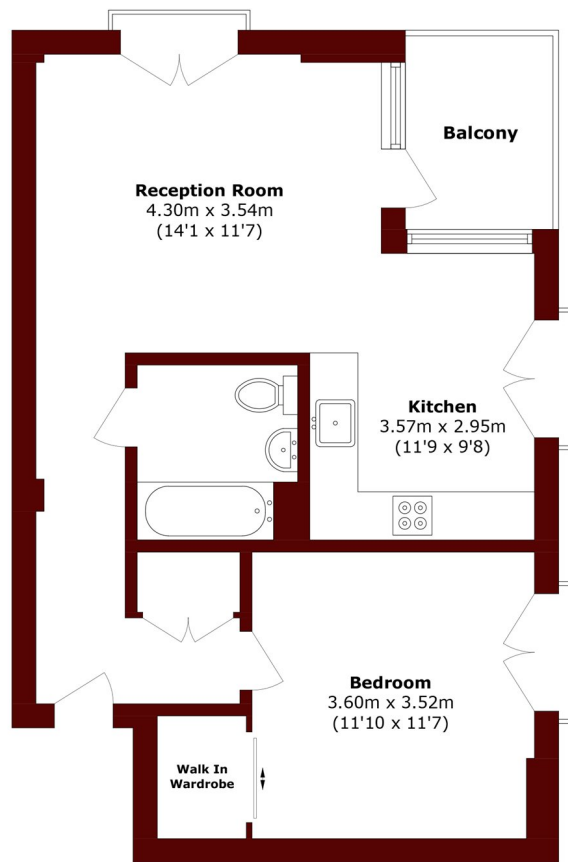
ABOUT THE PROPERTY

A superb one double bedroom, one bathroom apartment located in a modern and sought-after development in the centre of Brixton. The apartment itself boasts over 550 sq ft of bright, spacious living accommodation with a high spec fitted-kitchen and direct access on to a private balcony offering fantastic views over London. The development offers well-maintained communal areas with lift access to all floors, secure bike storage and a large shared communal roof terrace.

The property is desirably located in the centre of Brixton providing excellent links into central London and the City via Brixton Underground (Victoria Line) and Overground Station. With a vast array of independent bars, restaurants



STEP INSIDE BRIXTON HILL



Total area (approx.): 53.3 sq. m (573.7 sq. ft)

Balcony area (approx.): 6.1 sq. m (65.6 sq. ft)

Brixton
020 7733 4595

Energy Rating: B We aim to make our particulars both accurate and reliable. However, they are not guaranteed; nor do they form part of an offer or contract. If you require clarification on any points then please contact us, especially if you're traveling some distance to view. Please note that appliances and heating systems have not been tested and therefore no warranties can be given as to their good working order

**MARSH &
PARSONS**