

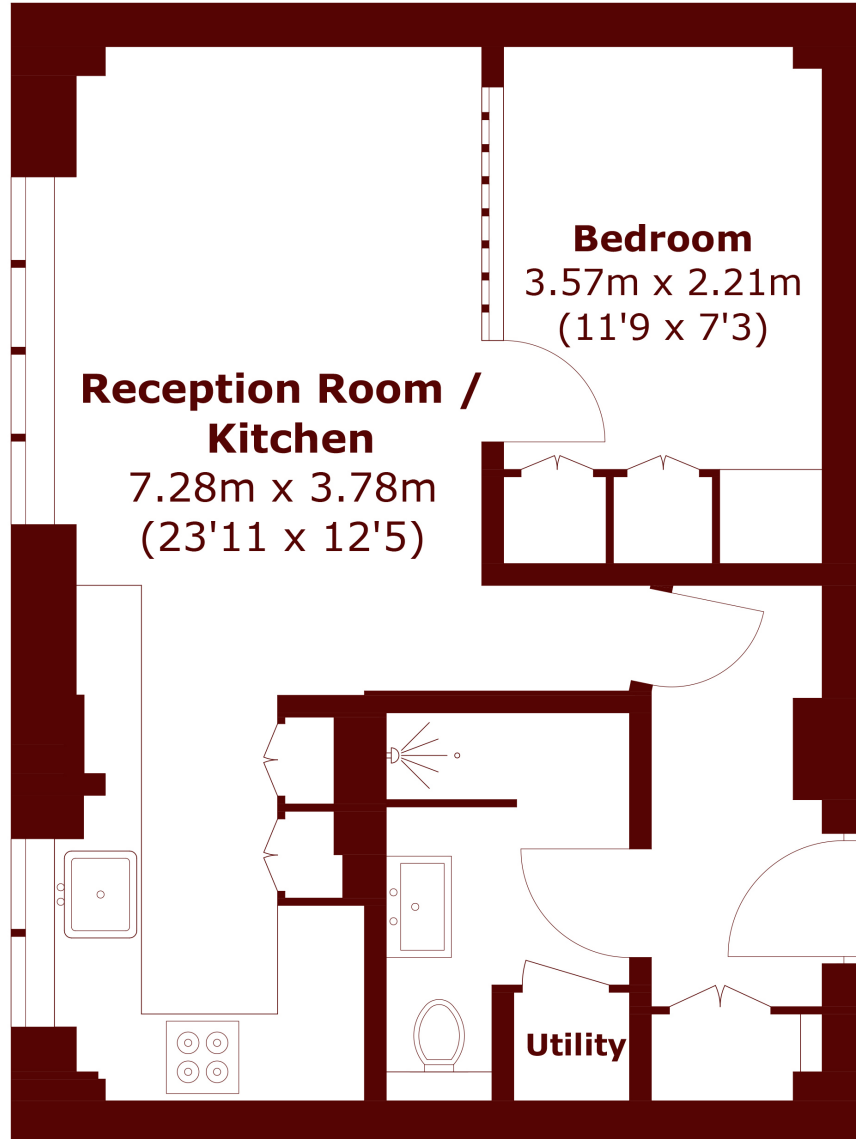


## Vicarage Court, W8

£465,000



- One Bedroom
- Portered Block
- Ground Floor
- Wooden Floors
- Separate Kitchen
- Prime Kensington



Total area (approx.): 38.7 sq. m (416.6 sq. ft)

**Marsh & Parsons Kensington**

9 Kensington Church Street,  
London, W8 4LF  
020 7368 4450