

MAZE HILL
GREENWICH, SE10

MARSH & PARSONS

WELCOME TO MAZE HILL



ABOUT THE HOME

This beautifully presented 1930s semi-detached home has been tastefully renovated throughout, blending period charm with contemporary design. A side driveway provides off-street parking and leads to a newly built outbuilding, ideal for storage, a home office or studio.

- Semi-detached House
- Three bedrooms
- Tastefully renovated
- Driveway
- Outbuilding
- Private garden





THE FINER DETAILS

Inside, the home has a spacious lounge-diner featuring bespoke cabinetry, shelving and a log burner, creating a warm and inviting living space. The open plan kitchen is centred around a striking feature island and comes fully equipped with integrated Neff appliances, complemented by a convenient guest WC on the ground floor.

The upper floor offers three well-proportioned bedrooms and a modern family bathroom. The principal bedroom benefits from an en suite shower room and has attractive views towards Greenwich Park. Additional highlights include underfloor heating throughout the ground floor and bathroom, wood flooring, a large loft, and a private rear garden with an easterly aspect.

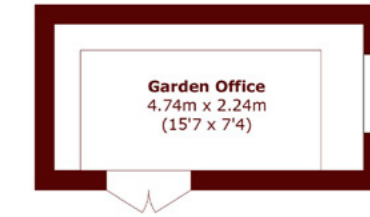
Maze Hill mainline station and the heart of Greenwich are just moments away, while Greenwich town centre and North Greenwich Underground station are within easy reach, making this an exceptional home for both convenience and lifestyle.



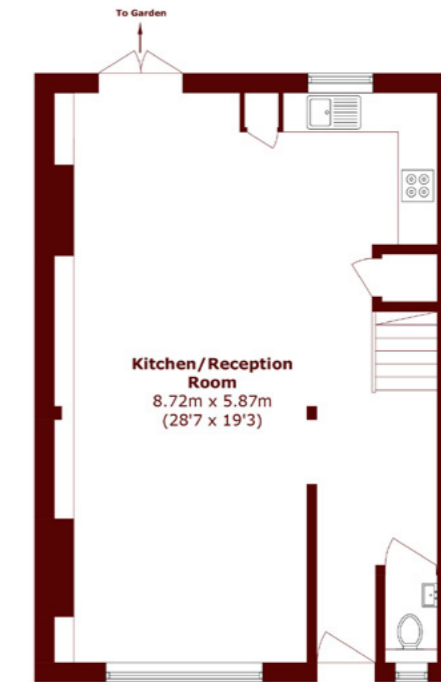
STEP INSIDE MAZE HILL

Greenwich
221 Greenwich High Road, SE10 8NB
Sales: 020 8312 8312

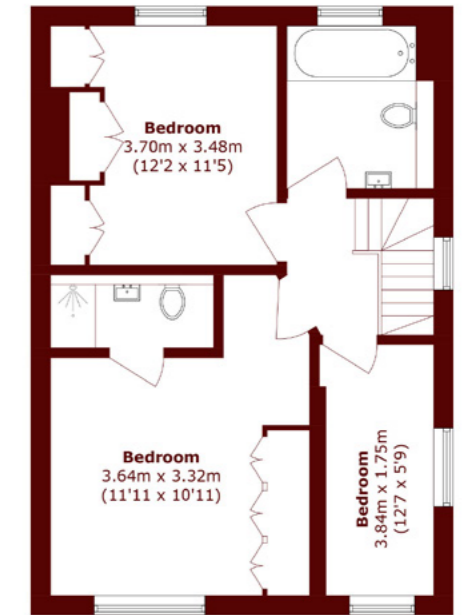
We aim to make our particulars both accurate and reliable. However, they are not guaranteed; nor do they form part of an offer or contract. If you require clarification on any points then please contact us, especially if you're traveling some distance to view. Please note that appliances and heating systems have not been tested and therefore no warranties can be given as to their good working order. EPC: D.



Ground Floor



Ground Floor



First Floor

Total approx. Floor area 1101.1 sq. ft (102.3 sq. m)
Outbuilding area 114.0 sq. ft (10.6 sq. m)

MARSH *&* PARSONS