



HORSEFERRY PLACE, SE10

£395,000

Third floor one bed apartment
Modern riverside development
Three Juliet balconies
Concierge on-site
Very short walk to DLR
Energy rating: b

@marshandparsons
marshandparsons.co.uk

MARSH &
PARSONS



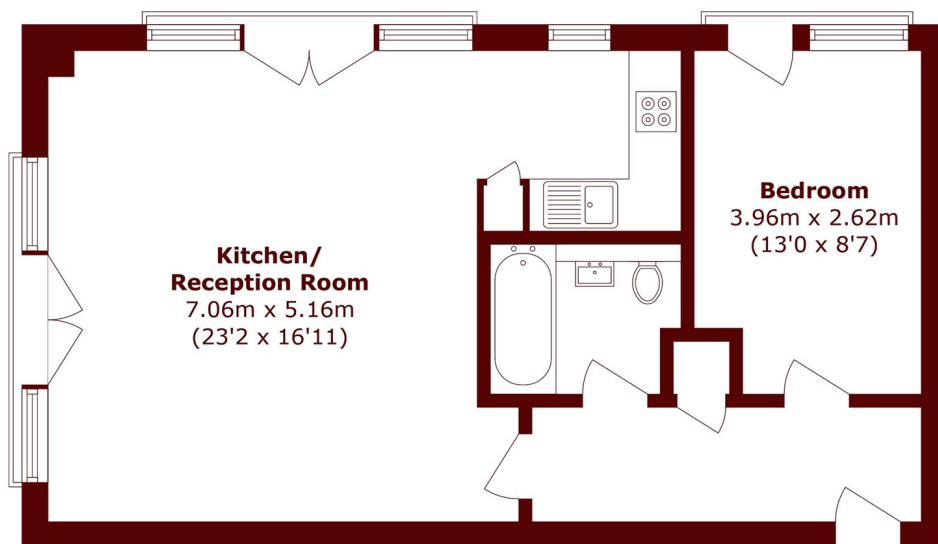
ABOUT THE PROPERTY

A very spacious third floor apartment within a small riverside development, benefitting from having a concierge and moments from Greenwich town centre and Greenwich's royal park. The interior comprises a south west facing double aspect living/dining room, open plan kitchen, double bedroom and a modern bathroom. Added benefits include wood floors, fitted storage and a communal lift. No onward chain.

Wood Wharf is located a stones throw away from the town centre, where you will find the covered market, Greenwich pier and a wide range of shops including riverside pubs, restaurants, gyms and supermarkets. Greenwich rail and DLR stations are a short walk away.



STEP INSIDE HORSEFERRY PLACE



Total Area (approx.): 53.5 sq. m (575.8 sq. ft)

Greenwich
020 8312 8312

Energy Rating: B We aim to make our particulars both accurate and reliable. However, they are not guaranteed; nor do they form part of an offer or contract. If you require clarification on any points then please contact us, especially if you're traveling some distance to view. Please note that appliances and heating systems have not been tested and therefore no warranties can be given as to their good working order

MARSH &
PARSONS