



SHIRLAND ROAD, W9

£415,000

Period Conversion
Raised Ground Floor
One Bedroom Apartment
Turnkey Condition
Close to Amenities

@marshandparsons
marshandparsons.co.uk

MARSH &
PARSONS



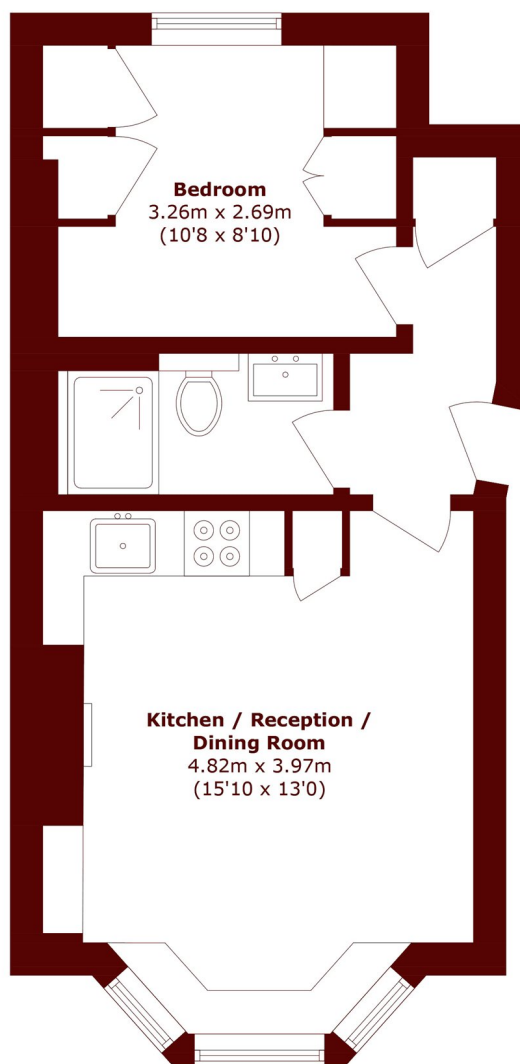
ABOUT THE PROPERTY

A stunning raised ground floor one bedroom apartment, recently refurbished to an exceptional standard with elegant herringbone style flooring, underfloor heating, and bespoke built in storage. The beautifully designed kitchen features quartz worktops including premium Miele and Bosch appliances. A bright bayfronted living room is complemented by a stunning TV media wall with a remote-controlled electric fireplace, perfect for modern living.

Ideally located close to Formosa Street and Clifton Road with their fantastic array of local amenities. The green open spaces of Regent's Park and Paddington Recreation Ground are also close by, as are the tranquil towpaths of



STEP INSIDE SHIRLAND ROAD



Total area (approx.): 34.3 sq. m (369.2 sq. ft)

Little Venice
020 7993 3050

Energy Rating: We aim to make our particulars both accurate and reliable. However, they are not guaranteed; nor do they form part of an offer or contract. If you require clarification on any points then please contact us, especially if you're traveling some distance to view. Please note that appliances and heating systems have not been tested and therefore no warranties can be given as to their good working order

**MARSH &
PARSONS**