



WORPLE ROAD, SW19

£2,500 per month

Two double bedrooms

Two bathrooms

Open plan

Lift access

Parking

Energy rating: b

@marshandparsons
marshandparsons.co.uk

MARSH &
PARSONS



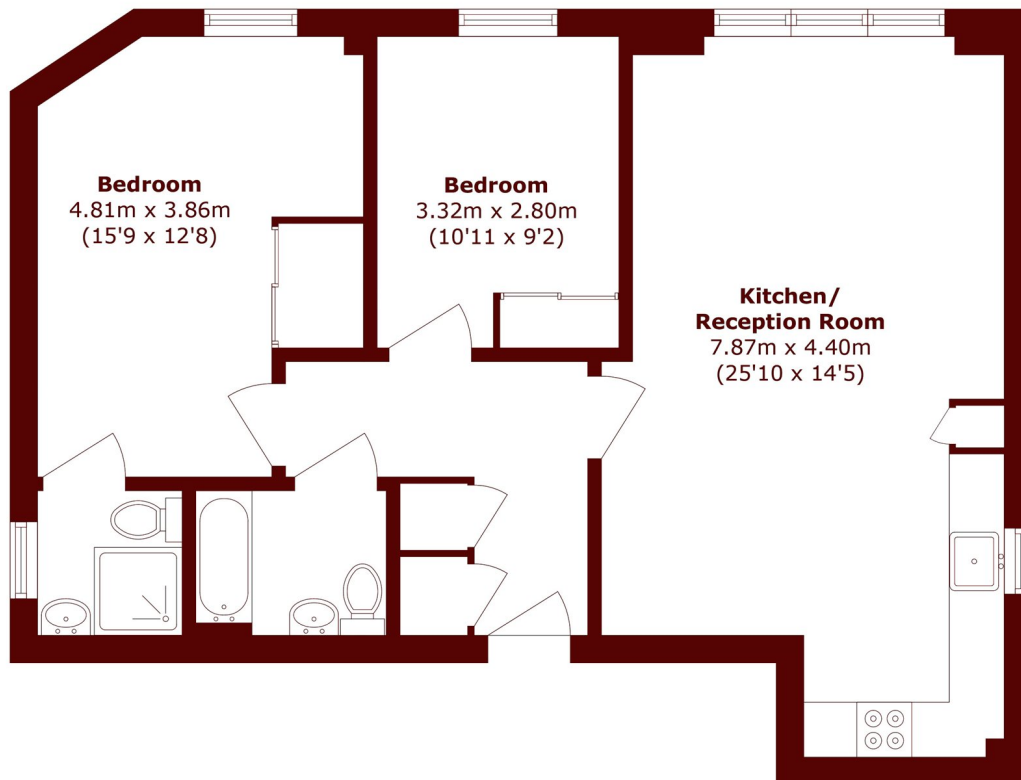
ABOUT THE PROPERTY

A two double bedroom, two bathroom modern apartment with parking available to let in Wimbledon. This second floor property comes with under floor heating, fitted wardrobes and a washer/dryer.

Ideally situated for Wimbledon Town Centre with its excellent transport links and shopping facilities as well as in easy reach of Wimbledon Village with its boutique shops, bars, restaurants and green spaces.



STEP INSIDE WORPLE ROAD



Total area (approx.): 71.5 sq. m (769.6 sq. ft)

Wimbledon
020 8879 6661

Energy Rating: B We aim to make our particulars both accurate and reliable. However, they are not guaranteed; nor do they form part of an offer or contract. If you require clarification on any points then please contact us, especially if you're traveling some distance to view. Please note that appliances and heating systems have not been tested and therefore no warranties can be given as to their good working order

MARSH &
PARSONS