



DORSET HOUSE, NW1

£1,450,000

Situated on the fourth floor of a highly regarded 24/7 portered building, this spacious two-bedroom apartment has the versatility to be used as a three-bedroom if required. With bright interiors and generous proportions,

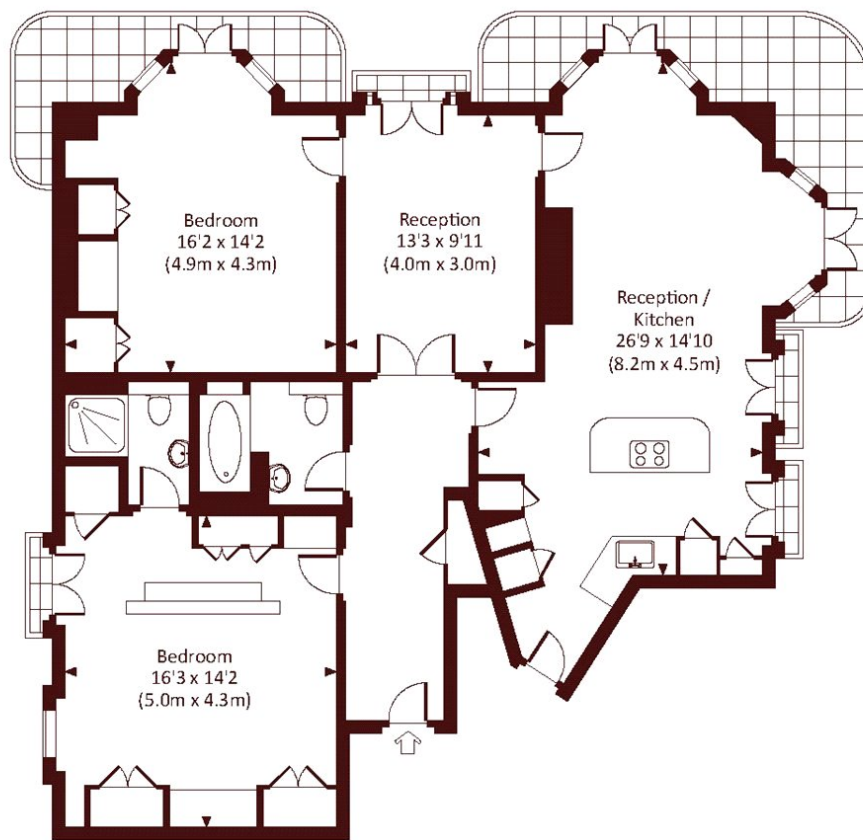
Two large double bedrooms
Open plan living
Modern throughout

Upper floor with lift
24/7 Ported building
Balcony

STEP INSIDE DORSET HOUSE

DORSET HOUSE, NW1

Approx. gross internal area
1188 Sq.Ft. / 110.4 Sq.M.



FOURTH FLOOR



All measurements have been made in accordance with RICS Code of Measuring Practice which are approximate only and only for illustrative purposes. For the avoidance of doubt, Dowling Jones Design shall not be liable for any reliance on these measurements. © 2016 www.dowlingjones.com 020 7610 9933

Marylebone & Mayfair
020 7935 1775

Energy Rating: C We aim to make our particulars both accurate and reliable. However, they are not guaranteed; nor do they form part of an offer or contract. If you require clarification on any points then please contact us, especially if you're traveling some distance to view. Please note that appliances and heating systems have not been tested and therefore no warranties can be given as to their good working order

MARSH &
PARSONS