



COACHMAKER MEWS, SW4

£565,000

- Superb mews house
- Private patio
- Vaulted ceilings
- Gated development
- Chain free
- Freehold

@marshandparsons
marshandparsons.co.uk

MARSH &
PARSONS



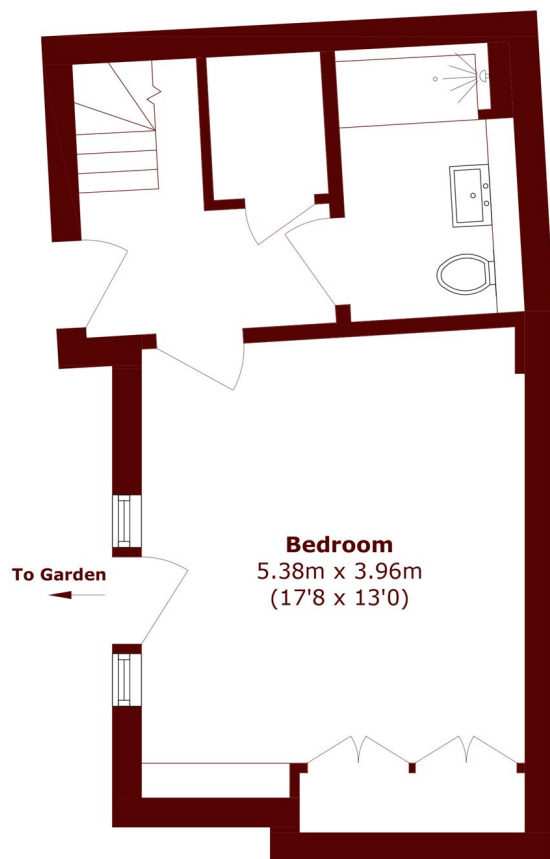
ABOUT THE PROPERTY

A unique one bedroom mews house tucked away within a smart gated development, ideally located for the vibrant amenities of Clapham High Street and the wide open spaces of Clapham Common. The property features a generous first floor reception room with kitchen and impressive vaulted ceilings, creating a wonderfully light and airy living space, while the ground floor provides a spacious bedroom, bathroom and direct access to the garden.

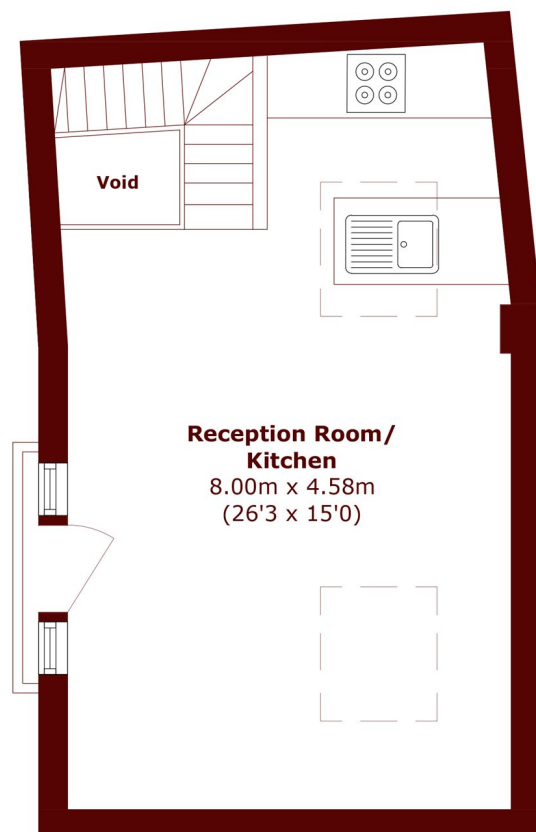
This flat is situated just off Clapham High Street, benefiting from the many cafés, restaurants and local amenities right on its doorstep.



STEP INSIDE COACHMAKER MEWS



Ground Floor



First Floor

Total area (approx.): 67.4 sq. m (737.3 sq. ft)
(Excluding Void)

Clapham
020 7501 3666

Energy Rating: C We aim to make our particulars both accurate and reliable. However, they are not guaranteed; nor do they form part of an offer or contract. If you require clarification on any points then please contact us, especially if you're traveling some distance to view. Please note that appliances and heating systems have not been tested and therefore no warranties can be given as to their good working order

**MARSH &
PARSONS**