



## PEARSON SQUARE, W1T

£1,400,000

One double bedroom  
Built in storage  
Long lease  
24 hour porter  
Fourth floor  
Separate utility room

@marshandparsons  
marshandparsons.co.uk

MARSH &  
PARSONS

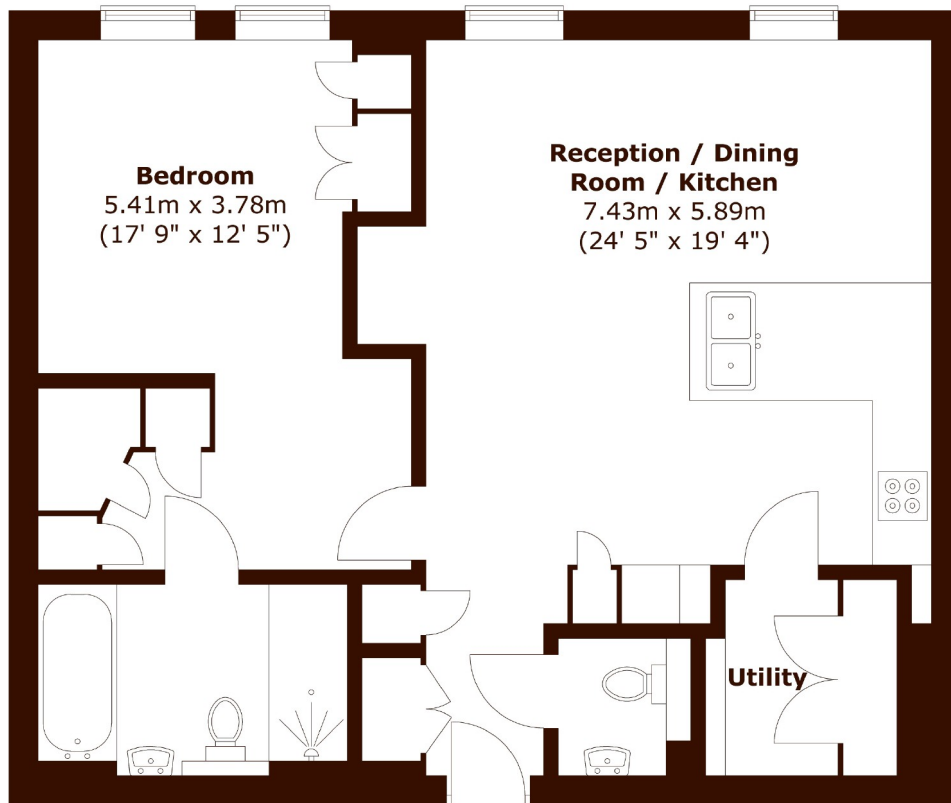


# ABOUT THE PROPERTY

Set within one of Fitzrovia's most prestigious developments, this beautifully designed one-bedroom apartment offers modern living in the heart of London's vibrant West End. The property features an open-plan living and dining area with floor-to-ceiling windows, flooding the space with natural light. A sleek, fully fitted kitchen with integrated appliances complements the contemporary design, while the generous bedroom includes ample built-in storage. The elegant bathroom is finished to the highest standard, creating a luxurious retreat. Residents of Pearson Square enjoy the benefits of a 24-hour porter.



# STEP INSIDE PEARSON SQUARE



Total area (approx.) : 68.4 sq. m (736 sq. ft)

**Marylebone & Mayfair**  
020 7935 1775

Energy Rating: B We aim to make our particulars both accurate and reliable. However, they are not guaranteed; nor do they form part of an offer or contract. If you require clarification on any points then please contact us, especially if you're traveling some distance to view. Please note that appliances and heating systems have not been tested and therefore no warranties can be given as to their good working order

**MARSH &  
PARSONS**