



CHISWICK HIGH ROAD, W4

£680,000

Two bedrooms
Open plan
Two balconies
Lift access
Allocated underground parking
Energy rating: c

@marshandparsons
marshandparsons.co.uk

MARSH &
PARSONS



ABOUT THE PROPERTY

This apartment is situated on the second floor of this popular development and offers over 1000sqft of living space. It has Two bedrooms, Two Bathrooms, Two Balconies, Large open plan Kitchen/ Reception, storage cupboards, Lift access, Video entry, communal garden, allocated underground parking and CCTV-protected gated development.

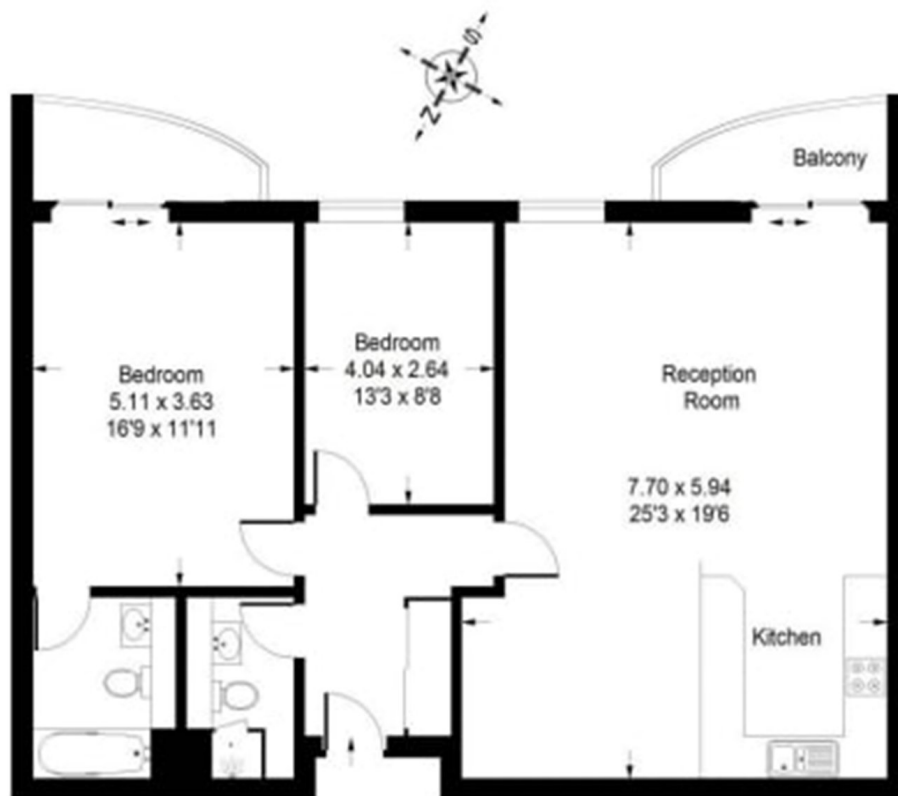
This property is located on Chiswick High Street, just steps from Chiswick Business Park. Excellent transport links are close by, with Gunnersbury Station (District & Overground) and Chiswick Park Station (District Line) both within easy reach.



STEP INSIDE CHISWICK HIGH ROAD

Chiswick High Road, W4

Approx. Gross Internal Area :-
93 sq m / 1001 sq ft



Second Floor

Chiswick
020 8994 2556

Energy Rating: C We aim to make our particulars both accurate and reliable. However, they are not guaranteed; nor do they form part of an offer or contract. If you require clarification on any points then please contact us, especially if you're traveling some distance to view. Please note that appliances and heating systems have not been tested and therefore no warranties can be given as to their good working order

MARSH &
PARSONS