



RATHMORE ROAD, SE7

£675,000

Terraced house
Three bedrooms
Two reception rooms
West facing garden
Victorian
Energy rating: d

@marshandparsons
marshandparsons.co.uk

MARSH &
PARSONS



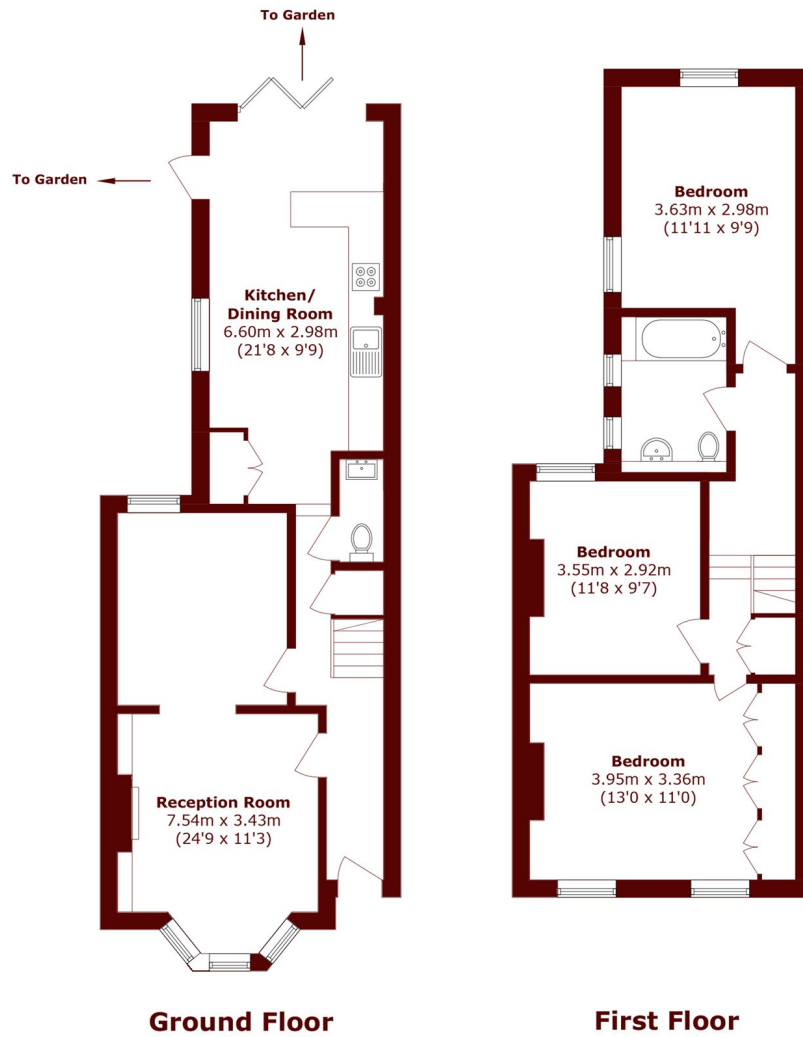
ABOUT THE PROPERTY

Guide Price £675,000 - £700,000. This charming three bedroom Victorian terraced house is an ideal family home, featuring a spacious double reception room that opens into a large open plan kitchen and dining area overlooking a well-maintained west facing garden. Upstairs are three generous double bedrooms and a modern family bathroom. The property is exceptionally well maintained, with double-glazed windows throughout.

Minutes from the station and bus routes, with excellent links to North Greenwich, the Elizabeth Line, Blackheath, and Greenwich town centre. Close to retail parks with M&S, Sainsbury's, gyms, cafés, and everyday amenities.



STEP INSIDE RATHMORE ROAD



Total area (approx.): 102.6 sq. m (1104.3 sq. ft)

Charlton
020 8293 0454

Energy Rating: D We aim to make our particulars both accurate and reliable. However, they are not guaranteed; nor do they form part of an offer or contract. If you require clarification on any points then please contact us, especially if you're traveling some distance to view. Please note that appliances and heating systems have not been tested and therefore no warranties can be given as to their good working order

MARSH &
PARSONS