



## OVERY HOUSE, SE1

£2,000 per month

One bedroom  
One bathroom  
Top floor  
Gated development  
Communal courtyard  
Close to station

@marshandparsons  
marshandparsons.co.uk

MARSH &  
PARSONS



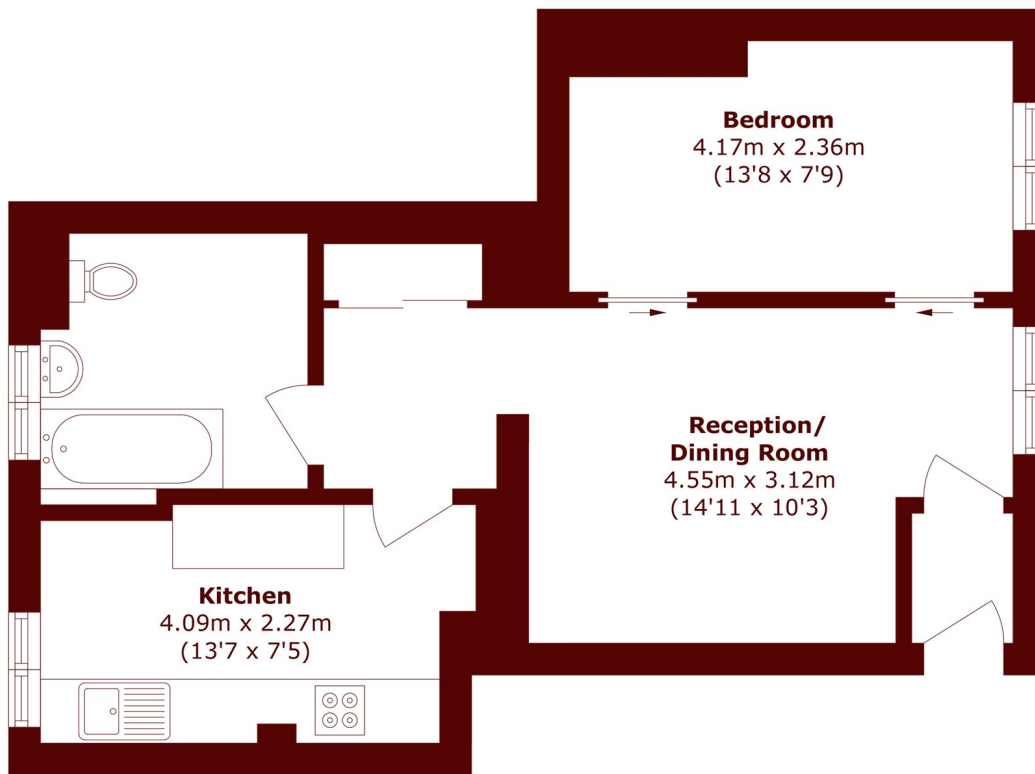
# ABOUT THE PROPERTY

A well-presented one bedroom apartment set within Overy House, a handsome Victorian purpose-built block positioned on Webber Row in the heart of Waterloo. The flat has been finished to a good standard throughout, offering a bright and well-proportioned reception room, a good-sized kitchen with ample storage, a comfortable double bedroom, and a contemporary bathroom. The property benefits from excellent natural light and retains much of the generous room volume typical of the period.

Webber Row sits in an enviable position within SE1, placed just a six minute walk from both Waterloo and Southwark stations.



# STEP INSIDE EVERY HOUSE



Total area (approx.): 46.2 sq. m (497.2 sq. ft)

**Kennington**  
020 7932 2920

Energy Rating: D We aim to make our particulars both accurate and reliable. However, they are not guaranteed; nor do they form part of an offer or contract. If you require clarification on any points then please contact us, especially if you're traveling some distance to view. Please note that appliances and heating systems have not been tested and therefore no warranties can be given as to their good working order

**MARSH &  
PARSONS**