



## BLACKHEATH ROAD, SE10

£2,000 per month

Two bedrooms  
Top floor  
Period conversion  
Open plan kitchen  
Good location  
Energy rating: d

@marshandparsons  
marshandparsons.co.uk

MARSH &  
PARSONS



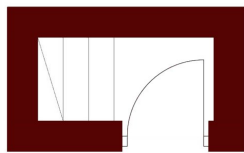
# ABOUT THE PROPERTY

Top floor Victorian conversion flat, situated within the Ashburnham Triangle conservation area. The interior comprises a double bedroom, study room, bathroom with shower over bath, lounge/diner and an open plan kitchen. Featuring sash windows, gas central heating and combi boiler.

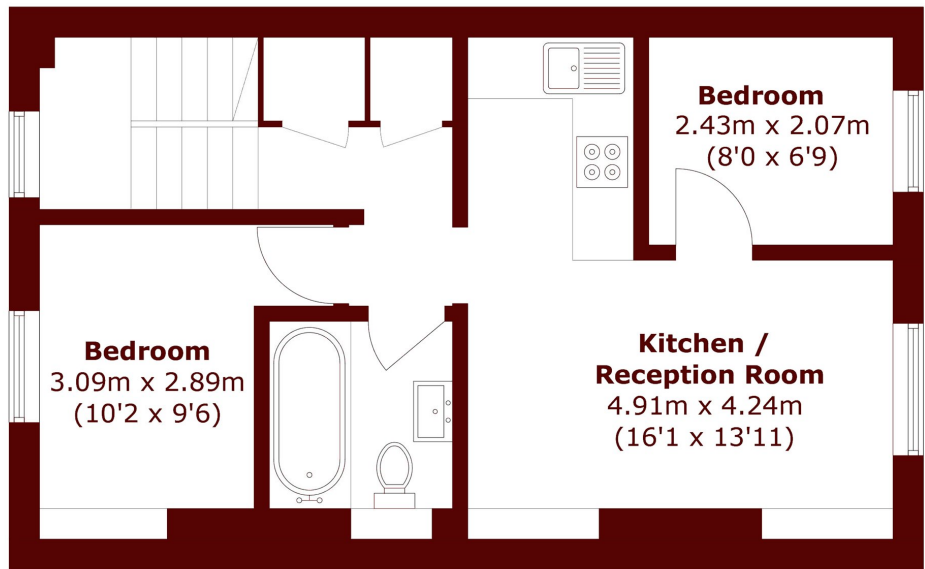
Ideally located within walking distance to both Deptford and Greenwich stations.



# STEP INSIDE BLACKHEATH ROAD



**Ground Floor**



**First Floor**

Total area (approx.): 42.9 sq. m (461.7 sq. ft)

**Greenwich**  
020 8815 2230

Energy Rating: D We aim to make our particulars both accurate and reliable. However, they are not guaranteed; nor do they form part of an offer or contract. If you require clarification on any points then please contact us, especially if you're traveling some distance to view. Please note that appliances and heating systems have not been tested and therefore no warranties can be given as to their good working order

**MARSH &  
PARSONS**