



## HORSEFERRY PLACE, SE10

£750,000

Modern apartment  
Two bedrooms  
Private balcony/terrace  
Panoramic views  
Close to stations  
Energy rating: b

@marshandparsons  
marshandparsons.co.uk

MARSH &  
PARSONS

# ABOUT THE PROPERTY

A recently built, exceptional corner apartment situated on the fifth floor, boasting uninterrupted panoramic views across the River Thames towards Canary Wharf, with additional iconic vistas of Cutty Sark, the Royal Naval college, the O2 Arena, and the city skyline. One of the standout features of this apartment is the expansive private balcony/terrace, directly overlooking the Thames which is ideal for entertaining or simply enjoying the ever-changing river views.

Perfectly positioned just a short walk from Greenwich town centre, with easy access to mainline rail and DLR stations, Greenwich royal park, and a wide selection of supermarkets, riverside pubs, cafés, and restaurants.







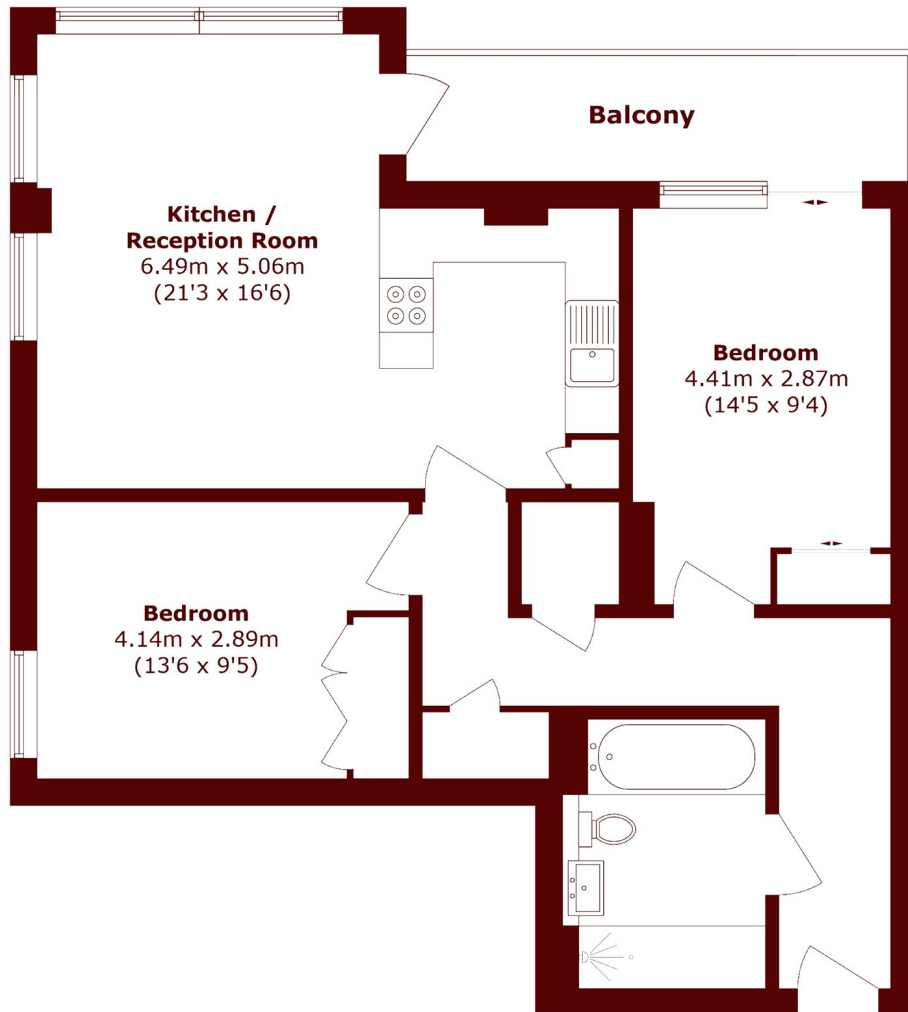
# FURTHER DETAILS

Internally, the property offers a bright and generously proportioned living and dining area with a desirable double aspect, complemented by a contemporary open plan kitchen fitted with high-quality integrated appliances.

The apartment comprises two spacious double bedrooms, both benefitting from tall fitted wardrobes, with the principal bedroom further enhanced by electric blackout blinds. The stylish four piece bathroom suite includes a large walk-in shower, a separate bath, and elegant modern finishes. Additional benefits include wood flooring throughout, underfloor heating, and excellent built-in storage.



# STEP INSIDE HORSEFERRY PLACE



Total area (approx.): 76.3 sq. m (821.3 sq. ft)

Balcony area (approx.): 7.8 sq. m (83.9 sq. ft)

Greenwich  
020 8312 8312

Energy Rating: B We aim to make our particulars both accurate and reliable. However, they are not guaranteed; nor do they form part of an offer or contract. If you require clarification on any points then please contact us, especially if you're traveling some distance to view. Please note that appliances and heating systems have not been tested and therefore no warranties can be given as to their good working order

MARSH &  
PARSONS