



GEORGE STREET, W1H

£300,000

This beautifully presented studio flat has been meticulously finished throughout, offering a perfect blend of modern style, comfort, and intelligent design. The property features a bright open-plan living space

Studio

Meticulously finished

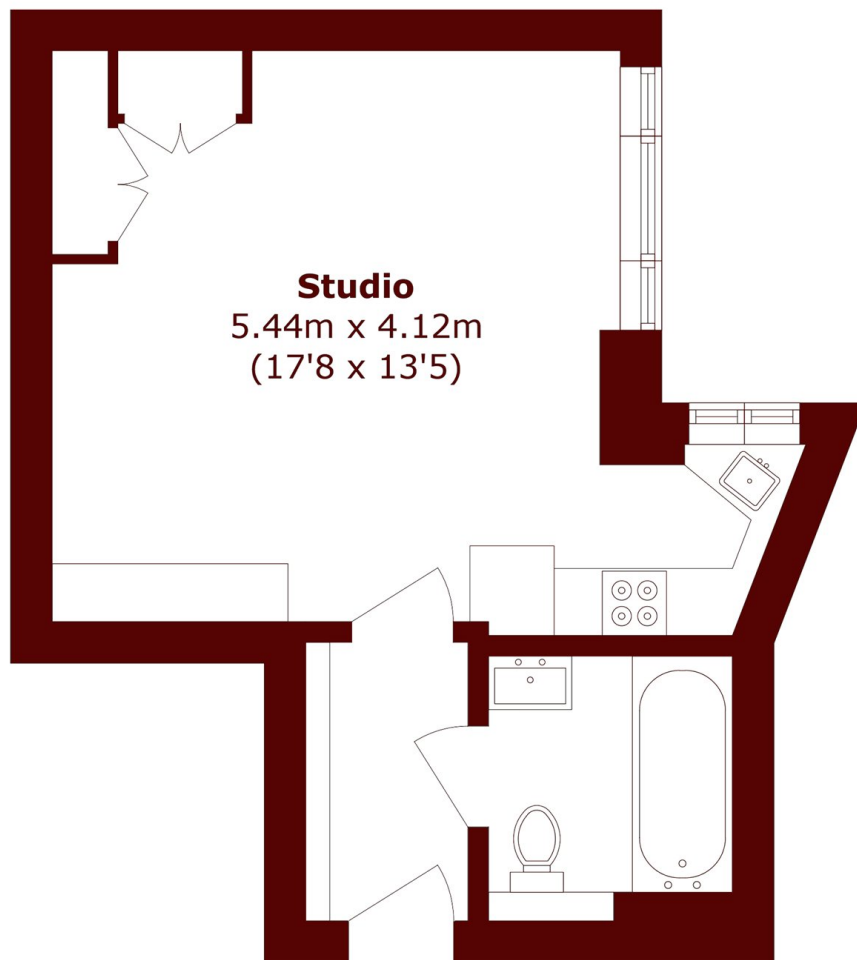
Naturally lit

Murphy bed

Modern kitchen

24 hour porter

STEP INSIDE GEORGE STREET



Total area (approx.): 24.9 sq. m (268.0 sq. ft)

Marylebone & Mayfair
020 7935 1775

Energy Rating: E We aim to make our particulars both accurate and reliable. However, they are not guaranteed; nor do they form part of an offer or contract. If you require clarification on any points then please contact us, especially if you're traveling some distance to view. Please note that appliances and heating systems have not been tested and therefore no warranties can be given as to their good working order

**MARSH &
PARSONS**