



## GLOUCESTER ROAD, W3

£2,600 per month

Terraced house

Period

Two Double bedrooms

South-facing garden

Excellent transport links

Energy rating : d

@marshandparsons  
marshandparsons.co.uk

MARSH &  
PARSONS



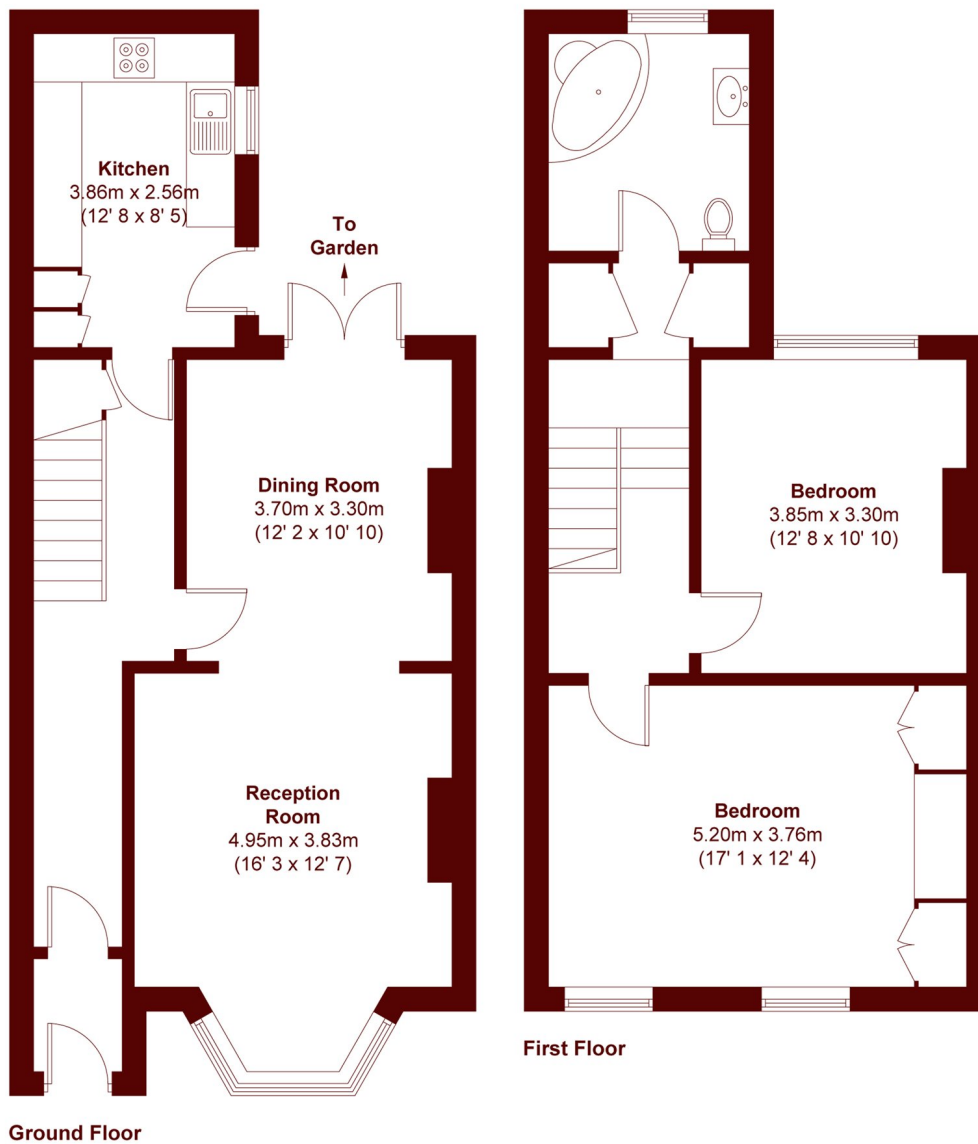
# ABOUT THE PROPERTY

This outstanding two-bedroom home is located on a quiet tree-lined road, and benefits from beautiful period features. The property is well-proportioned throughout and is presented in immaculate condition. The ground floor comprises of a large open plan reception and dining room, along with a separate eat-in kitchen. Generous bedroom accommodation is found on the first floor with two double bedrooms and a family bathroom. The property also benefits from a south-facing garden and residents parking.

Gloucester Road is moments from the wide array of shops and restaurants Acton has to offer. There are also excellent transport links.



# STEP INSIDE GLOUCESTER ROAD



APPROX. GROSS INTERNAL FLOOR AREA  
1128 SQFT / 104.8 SQM

Chiswick  
020 8629 0900

Energy Rating: D We aim to make our particulars both accurate and reliable. However, they are not guaranteed; nor do they form part of an offer or contract. If you require clarification on any points then please contact us, especially if you're traveling some distance to view. Please note that appliances and heating systems have not been tested and therefore no warranties can be given as to their good working order

MARSH &  
PARSONS